



**Food Security and Nutrition
Analysis Unit Somalia**

Information for Better Livelihoods



Post Gu '11

Presentation

August 16th, 2011



Integrated Nutrition Situation Analysis – Vetting Meeting

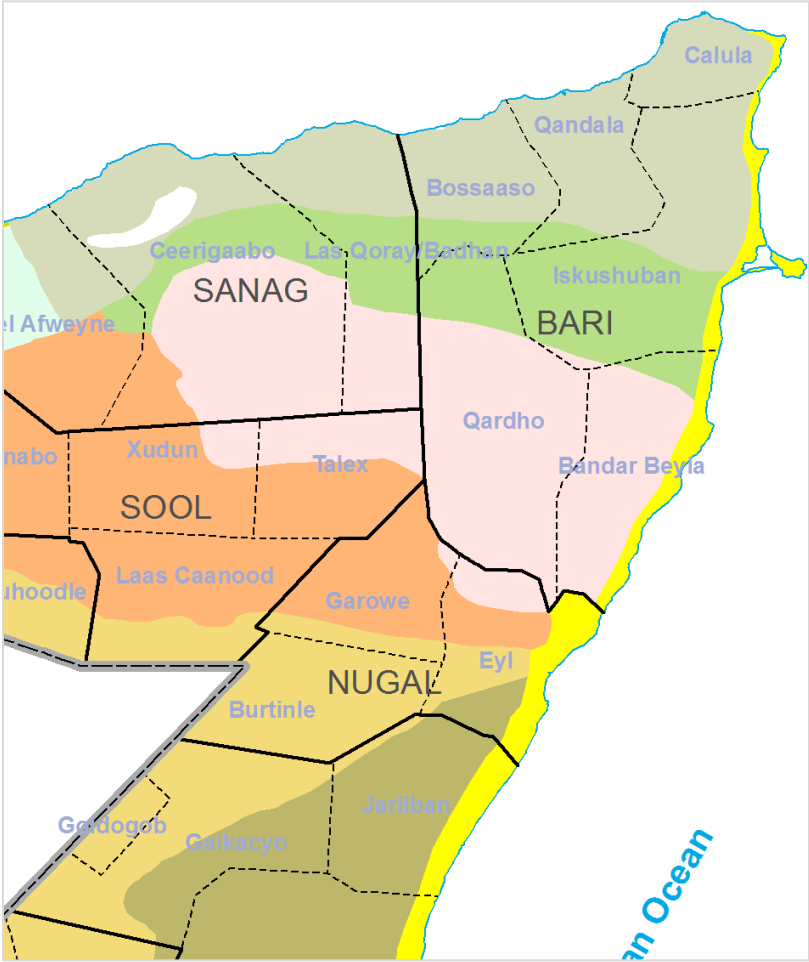
Northeast Regions - Puntland



EUROPEAN COMMISSION



Livelihood zones in the Northeast

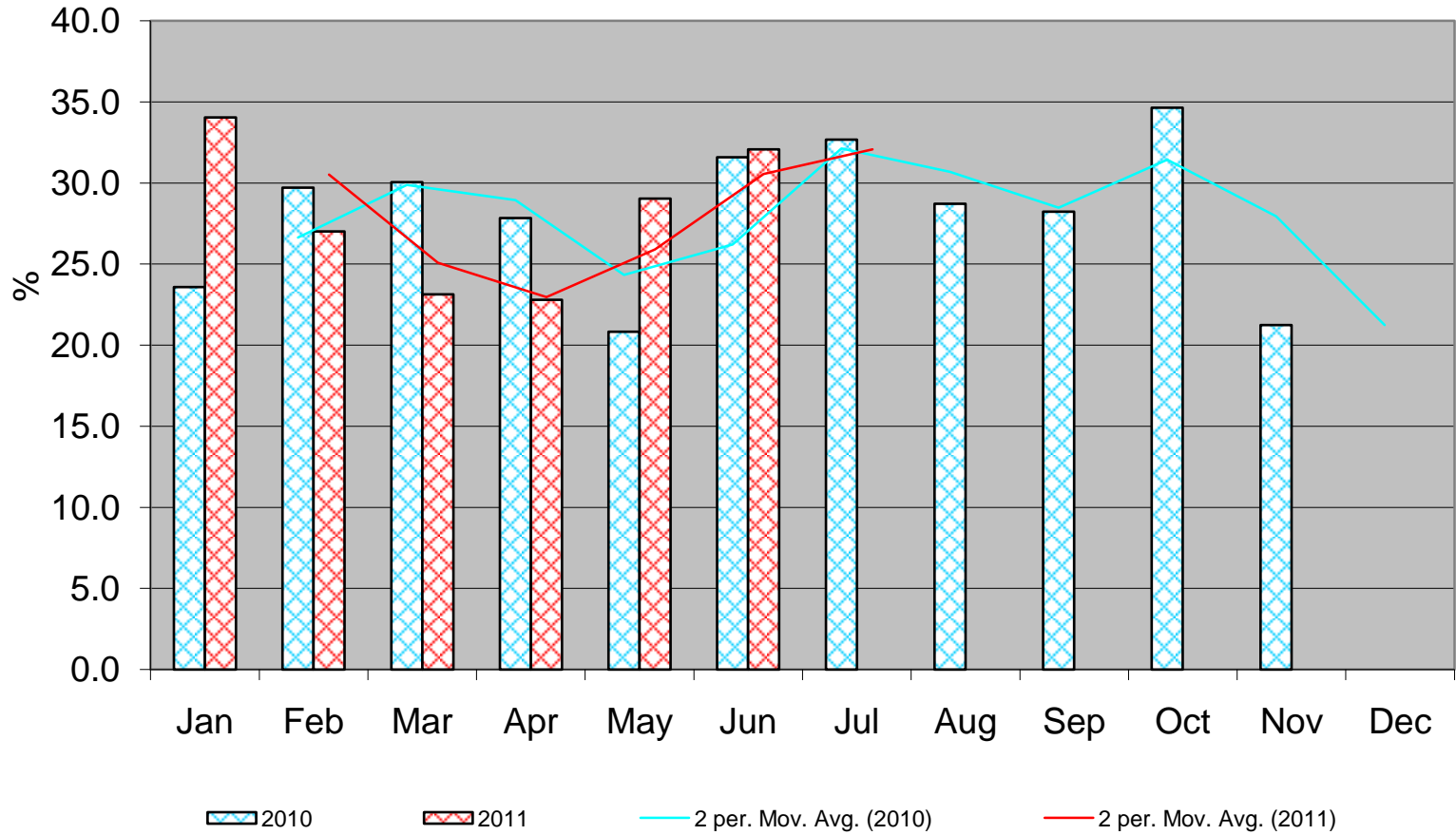


Predominately pastoral with eight livelihood zones:

- East Golis (cutting across NW), Gagaab, *Kakaar*,
- Nugal Valley and Sool Plateau (cutting across NW).
- The Coastal Deeh, Hawd and Addun, cutting across the Northeast and Central.

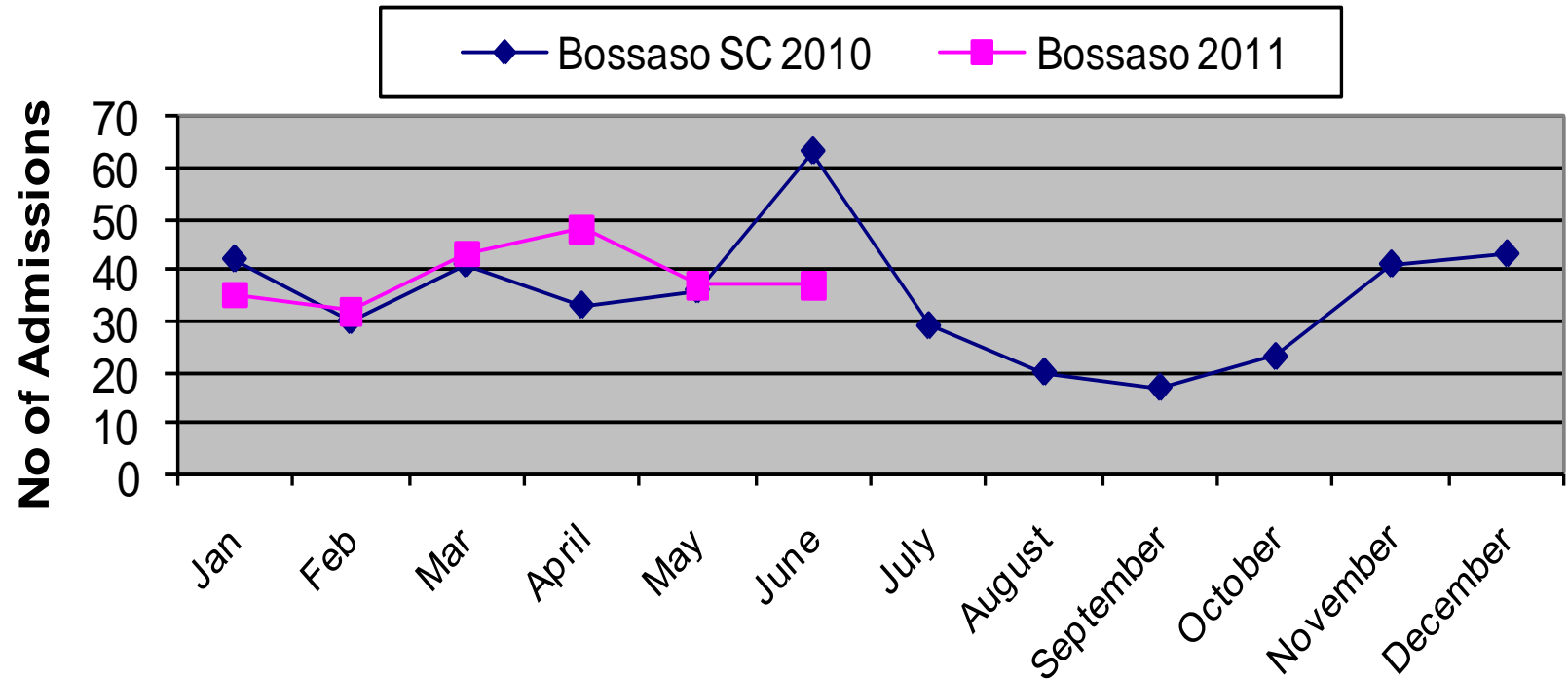
Bossaso IDP, Summary of Findings			
Outcome indicators	Gu'10 (N=210)	Deyr'10/11 (N=494)	Gu'11 (N= 611)
Child Nutrition status			
o <i>GAM (WHZ<-2 or oedema)</i>	>26 (Pr=0.90)	15.6 (12.7-19.1)	24.4 (20.9-28.3)
o Mean WHZ	-1.35	-0.90	-1.17
o <i>SAM (WHZ<-3 or oedema)</i>	>3.3 (Pr=0.90)	2.8 (1.6-4.8)	4.7 (3.2-7.1)
o <i>Oedema</i>	0.0	0.4	0.8
o <i>MUAC (<12.5 cm or oedema)</i>	23.0(16.3-29.7)	15.1(11.9-18.3)	11.0 (8.1-14.6)
o <i>MUAC (<11.5 cm or oedema)</i>	8.1(4.1-12.2)	4.3(2.6-6.0)	2.0 (1.0- 3.9)
o <i>HIS Nutrition Trends</i>	High (>15%) & Stable(Jan-Jun'09)	High (>15%) & Stable(High (>20%) and stable
o <i>TFPs/SFPs Admission trends</i>	High levels -OTP admissions-in Bosaaso n=1084,(Jan-May '10)	High levels -OTP admissions-in Bosaaso n=)	Stable in SC
o Crude Death rate/10,000/day	N/A	0.15 (0.05-0.42)	0.89 (0.58-1.37)
o U5 Death rate/10,000/day	N/A	1.24 (0.51-2.99)	2.23 (1.20-4.11)
OVERALL NUTRITION SITUATION	Very critical	Critical	Very critical
Child Morbidity, Immunization, IYCF			
o <i>Disease Outbreaks:</i>			
o <i>Morbidity based on 2wk recall</i>	Morbidity-72.2	Morbidity-62.5	Measles Outbreak Morbidity – 53.8
o <i>Immunization status/Vit. A</i>	Meascler:89.5: Vit A: 92.8	Meascler:91.2: Vit A: 94.5	Vitamin A –93.0; Measles -88.9
o <i>Children eating from >=4 fdgps</i>	48.3(35.0-61.3)	9.0(4.3-13.6)	4.4
o <i>Children meeting Rec. feeding freq.</i>	57.5(44.7-70.2)	30.9(20.8-41.0)	44.9 (33.6 – 56.1)
Public Health Indicators; Gender	N=107	N=455	N=376
o <i>Households (HH) accessing safe water</i>	62.6	28.5 (12.9-44.2)	69.4
o <i>HH accessing sanitation facilities</i>	86	60.7(55.1-76.3)	76.3
o <i>Relation between GAM & child sex</i>	Insignificant	Insignificant	Insignificant
o <i>Relation between GAM & sex of hh head</i>	Insignificant	Insignificant	Insignificant
Food Security Phase	HE	HE	HE
<i>Proportion of hh consuming <4 fd gps</i>	17.8	8.5	18.9
Overall Risk to Deterioration	Uncertain	Uncertain	Uncertain

HIS Malnutrition Trends in Bossaso MCHs (Data Source: MoH/UNICEF/SRCS)



Bossaso SC 2010 - 2011

(Data source: MoH/UNICEF/Bossaso Hospital)



Galkayo IDP, Summary of Findings			
Outcome indicators	Gu'10, (N=198)	Deyr'10/11 (N=480)	Gu' 11 (N= 602)
Child Nutrition status			
o <i>GAM (WHZ<-2 or oedema)</i>	>11.4 (Pr=0.90)	16.3 (13.2-20.0)	20.3 (16.1-25.2)
o Mean WHZ	0.61	0.81	-1.13
o <i>SAM (WHZ<-3 or oedema)</i>	>1.2 (Pr=0.90)	2.9 (1.8-4.5)	4.4 (2.9 -6.6)
o <i>Oedema</i>	0.0	0.0	0.5
o <i>MUAC (<12.5 cm or oedema)</i>	7.1 (3.3-10.8)	5.1 (3.5-7.3)	16.2 (12.5-20.6)
o <i>MUAC (<11.5 cm or oedema)</i>	0.1	0.0	1.6 (0.9- 3.0)
o <i>HIS Nutrition Trends</i>	N/A	N/A	N/A
o <i>TFPs/SFPs Admission trends</i>	N/A	N/A	High fluctuating
o Crude Death rate/10,000/day	N/A	1.00 (0.52-1.93)	0.89 (0.59-1.36)
o U5 Death rate/10,000/day	N/A	1.50 (0.65-3.50)	1.01 (0.47-2.17)
OVERALL NUTRITION SITUATION	Very Critical	Critical	Very Critical
Child Morbidity, Immunization, IYCF			
o <i>Disease Outbreaks:</i>	No Outbreak	No Outbreak	No Outbreak
o <i>Morbidity based on 2wk recall</i>	Morbidity-46.9	Morbidity-43.4(35.9-50.8)	Morbidity-49.3
o <i>Immunization status/Vit. A</i>	Measles:91.9: Vit A:95.5	Measles:83.5: Vit A:81.6	Measles:86.6: Vit A:87.4
o <i>Children eating from <4 fdgps</i>	27.1(13.9-40.2)	15 (4.3-25.7)	7.7
o <i>Children meeting Rec. feeding freq.</i>	26.0(14.3-37.7)	8.7(6.3-11.4)	31.1
Public Health Indicators; Gender	N=95	N=445	N=386
o <i>Households (HH) accessing safe water</i>	94.7	65.4 (47.2-83.6)	99.5
o <i>HH accessing sanitation facilities</i>	71.3	38.1(20.3-56.0)	98.3
o <i>Relation between GAM & child sex</i>	Insignificant	Insignificant	Insignificant
o <i>Relation between GAM & sex of hh head</i>	Insignificant	Insignificant	Insignificant
Food Security Phase	HE	HE	HE
<i>Proportion of hh consuming <4 fd gps</i>	1.1	1	2.8
Overall Risk to Deterioration	Uncertain	Deteriorating	Uncertain

Outcome indicators	Garowe IDP, Summary of Findings		
	Gu'10 (N=198)	Deyr'10/11 (N=494)	Gu'11 (N= 604)
Child Nutrition status			
o GAM (WHZ<-2 or oedema)	>11.5%(Pr=0.90)	13.3 (11.0-15.9)	20.5 (17.5-24.0)
o Mean WHZ	-0.96	-0.96	-1.18
o SAM (WHZ<-3 or oedema)	>3.0 (Pr=0.90)	2.5 (1.6-3.9)	1.8 (0.9-3.7)
o Oedema	0.0	0.1	0.3
o MUAC (<12.5 cm or oedema)	11.1(5.5-16.7)	9.6 (7.0-12.9)	14.9 (12.4-17.7)
o MUAC (<11.5 cm or oedema)	2.0 (0.1-4.5)	0.4 (0.1-1.2)	4.6 (3.1-6.9)
o HIS Nutrition Trends		N/A	N//A
o TFPs/SFPs Admission trends		High levels -OTP admissions-in Garowe	Steady increase (though operational for <a year)
o Crude Death rate/10,000/day	N/A	0.24 (0.10-0.60)	0.61 (0.31-1.19)
o U5 Death rate/10,000/day	N/A	0.41 (0.13-1.33)	1.39 (0.47-4.02)
OVERALL NUTRITION SITUATION	Serious	Serious	Very Critical
Child Morbidity, Immunization, IYCF			
o Disease Oubreaks:	No outbreak Disease	No outbreak Disease	AWD and measles Outbreak
o Morbidity based on 2wk recall	Morbidity- 35.4	Morbidity-40.5(32.7-48.2)	Morbidity-45.0
o Immunization status/Vit. A	Meascler:94.4: Vit A:95.9	Meascler:79.2 Vit A: 84.2	Meascler:80.8%: Vit A:82.5%
o Children eating from >=4 fdgps	12.9(9.2-16.6)	6.9(1.4-12.5)	2.6
o Children meeting min. feeding freq.	29.8(17.1-42.5)	9.2(5.7-12.7)	29.5 (24.9 – 34.0)
Public Health Indicators; Gender	N=88	N=455	N=377
o Households (HH) accessing safe water	46.5	41.7	53.6
o HH accessing sanitation facilities	88.6	35.8	60.7
o Relation between GAM & child sex	Insignificant	Insignificant	Insignificant
o Relation between GAM & sex of hh head	Insignificant	Insignificant	Insignificant
Food Security Phase		HE	HE
Proportion of hh consuming <4 fd gps	2.1	8.0	12.2
Overall Risk to Deterioration	Potential to deteriorate	Uncertain	Uncertain

Qardho IDP, Summary of Findings

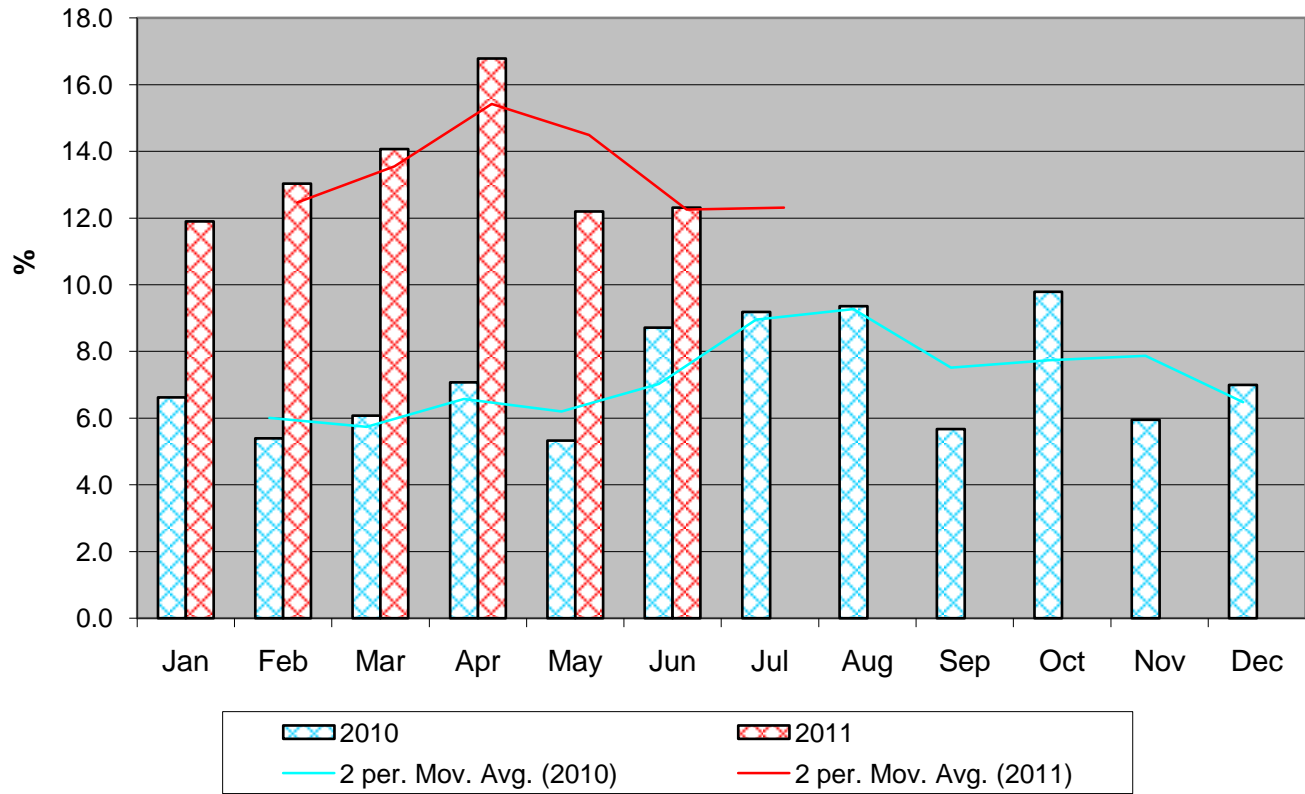
Outcome indicators	Deyr'09/10 (N=210)	Deyr'10/11 (N=214)	Gu'11 (N= 211)
Child Nutrition status			
○ GAM (WHZ<-2 or oedema)		>10.6 (Pr=0.90)	>23.8 (Pr.=0.90)
○ Mean WHZ		-0.65	-1.38
○ SAM (WHZ<-3 or oedema)		>2.7 (Pr=0.90)	>8.2 (Pr.=0.90)
○ Oedema		0.5	0.9
○ MUAC (<12.5 cm or oedema)		13.2(16.3-29.7)	>19.8 (Pr.=0.90)
○ MUAC (<11.5 cm or oedema)	N/A	8.1(4.1-12.2)	>4.4 (Pr.=0.90)
○ HIS Nutrition Trends	N/A	N/A	N/A
○ TFPs/SFPs Admission trends			Stable Admissions in Karkar OTP
OVERALL NUTRITION SITUATION		Serious	Very Critical
Child Morbidity, Immunization, IYCF			
○ Disease Oubreaks: ○ Morbidity based on 2wk recall		Morbidity-9.8 Diarrhea 9.8, ARI. 3.7%	Measles Outbreak Morbidity– 38.4
○ Immunization status/Vit. A		Measles Vac:63.5 Vit A: 91.1%, Polio vac. 91,1%	Vit A : 80.1; Measles : 70.0
○ Children eating from >=4 fdgps		N/A	3.8
○ Children meeting Rec. feeding freq.		N/A	66.3
Public Health Indicators; Gender			N=103
○ Households (HH) accessing safe water		N/A	61.2
○ HH accessing sanitation facilities		N/A	98.1
○ Relation between GAM & child sex		N/A	Insignificant
○ Relation between GAM & sex of hh head		N/A	Insignificant
Food Security Phase Proportion of hh consuming <4 fd gps		AFLC	HE 20.4 (10.4 – 30.4)
Overall Risk to Deterioration		Uncertain	Uncertain

Mergaga IDP, Summary of Findings

Outcome indicators	Deyr'09/10 (N=210)	Deyr'10/11 (N=214)	Gu'11 (N= 207) Comprehensive
Child Nutrition status			
○ <i>GAM (WHZ<-2 or oedema)</i>			22.7
○ <i>Mean WHZ</i>			-1.22
○ <i>SAM (WHZ<-3 or oedema)</i>			2.9
○ <i>Oedema</i>			0.0
○ <i>MUAC (<12.5 cm or oedema)</i>			4.3
○ <i>MUAC (<11.5 cm or oedema)</i>	NO ASSESSMENT	NO ASSESSMENT	0.5
○ <i>HIS Nutrition Trends</i>			N/A
○ <i>TFPs/SFPs Admission trends</i>			N/A
OVERALL NUTRITION SITUATION			Very Critical
Child Morbidity, Immunization, IYCF			
○ <i>Disease Oubreaks:</i>			Measles Outbreak
○ <i>Morbidity based on 2wk recall</i>			Morbidity – 69.1
○ <i>Immunization status/Vit. A</i>			Vitamin A –89.4; Measles -86.5
○ <i>Children eating from >=4 fdgps</i>			4.6
○ <i>Children meeting Rec. feeding freq.</i>			70.8
Public Health Indicators; Gender			N=119
○ <i>Households (HH) accessing safe water</i>			98.3
○ <i>HH accessing sanitation facilities</i>			44.1
○ <i>Relation between GAM & child sex</i>			Insignificant
○ <i>Relation between GAM & sex of hh head</i>			Insignificant
Food Security Phase			HE
<i>Proportion of hh consuming <4 fd gps</i>			3.4
Overall Risk to Deterioration			Uncertain

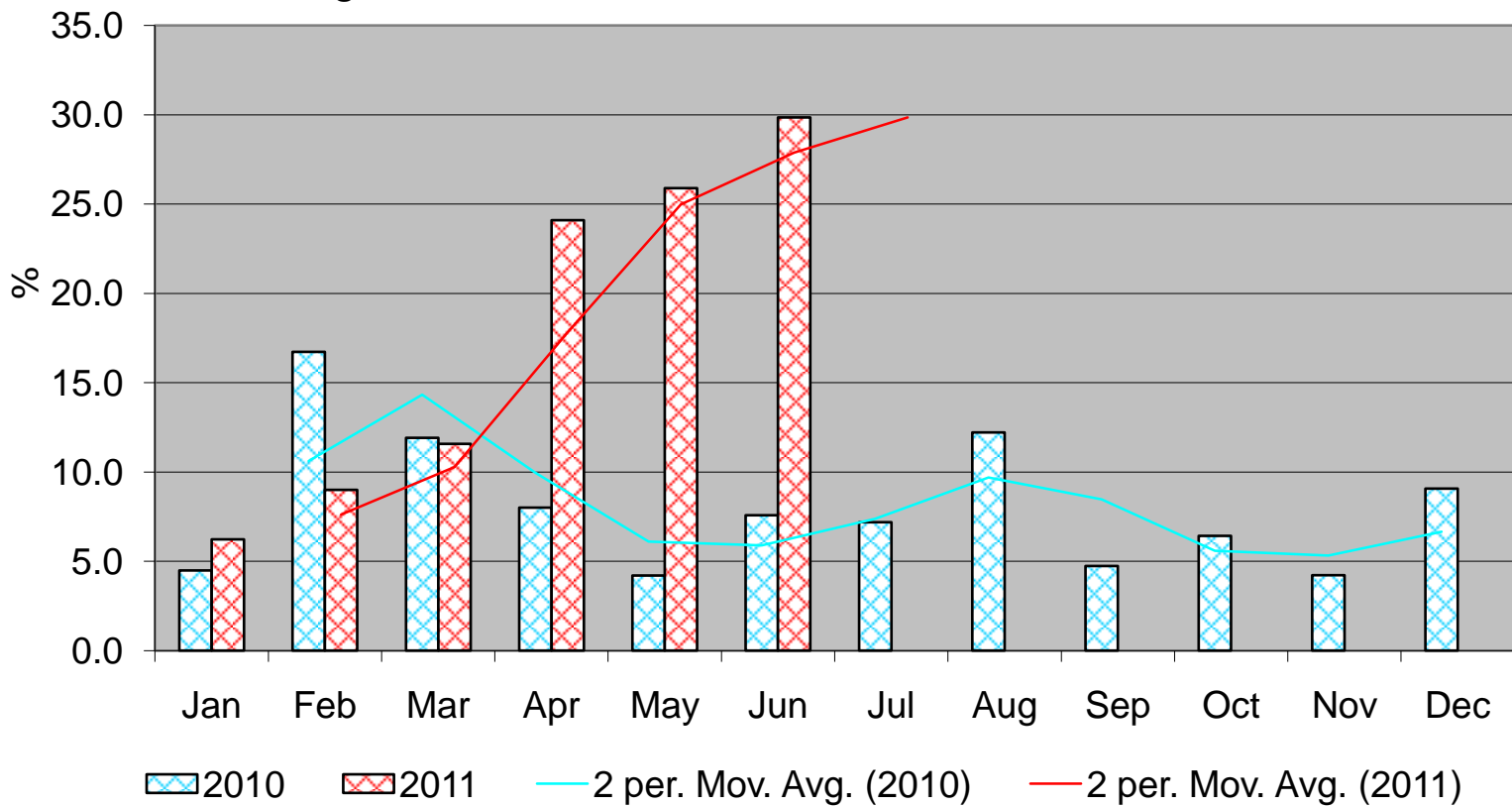
Outcome indicators	HAWD Livelihood Zone, Summary of Findings		
	Gu'10 (N=647)	Deyr'10/11 (N=593)	Gu' 11 (N =576)
Child Nutrition status			
o GAM (WHZ<-2 or oedema)	15.3(12.02-18.6)	13.0(10.4-16.2)	14.4 (10.9-18.8)
o Mean WHZ	-0.89	-0.76	-0.87
o SAM (WHZ<-3 or oedema)	3.9 (1.6-6.1)	2.9 (1.8-4.7)	3.8 (2.4-6.0)
o Oedema	0.3 (0.1-0.9)	0.3	0.5
o MUAC (<12.5 cm or oedema)	6.0(3.4-8.6)	3.7(2.5-5.4)	5.9 (3.9-8.9)
o MUAC (<11.5 cm or oedema)	1.08 (0.2 – 1.96)	1.7 (0.8-3.3)	1.6 (0.7-3.5)
o HIS Nutrition Trends	Low proportion but increasing trends	Low proportion but increasing trends	High proportion but fluctuating trends
o TFPs/SFPs Admission trends	High levels and stable(Jan-June 09)	High levels and stable(Jan-June 09)	Stable
Crude death Rate/10,000/day (90days)	1.07(0.64-1.79)	0.3(0.14-0.62)	0.91 (0.60-1.37)
Under 5 death Rate/10,000/day (90days)	1.78 (0.74-4.21)	0.62 (0.21-1.92)	2.12 (1.19-3.77)
OVERALL NUTRITION SITUATION	Critical	Serious	Serious
Child Morbidity, Immunization, IYCF			
o Disease Oubreaks: o Morbidity based on 2wk recall	No outbreak Morbidity-58.4	No outbreak Morbidity-34.6	Cholera outbreak Morbidity 37.5%
o Immunization status/Vit. A	Measclses;51.3: VitA;48.6	Measclses;58.3: VitA;48.6	Measles Vac 82.3, VitA 74.8
o Children eating from >=4 fdgps	48.7(37.4-60.0)	7.8 (2.5-13.0)	16.3 (7.8-24.9)
o Children meeting min. feeding freq.	39.7(29.5-49.9)	40.6 (27.9-53.3)	52.7 (43.7-61.8)
Public Health Indicators; Gender	N=378	N=336	N= 576
o Households (HH) accessing safe water	31.7	30.9	33.8
o HH accessing sanitation facilities	50.0	61.7	66.5
o Relation between GAM & child sex	Insignificant	Insignificant	Insignificant
o Relation between GAM & sex of hh head	Insignificant	Insignificant	Insignificant
Food Security Phase Proportion of hh consuming <4 fd gps	HE /AFLC 0.8	HE /AFLC 0.8	AFLC 16.3
Overall Risk to Deterioration	STABLE	STABLE	Likely to deteriorate

Figure: HIS Malnutrition Trends in Hawd Pastoral LHz



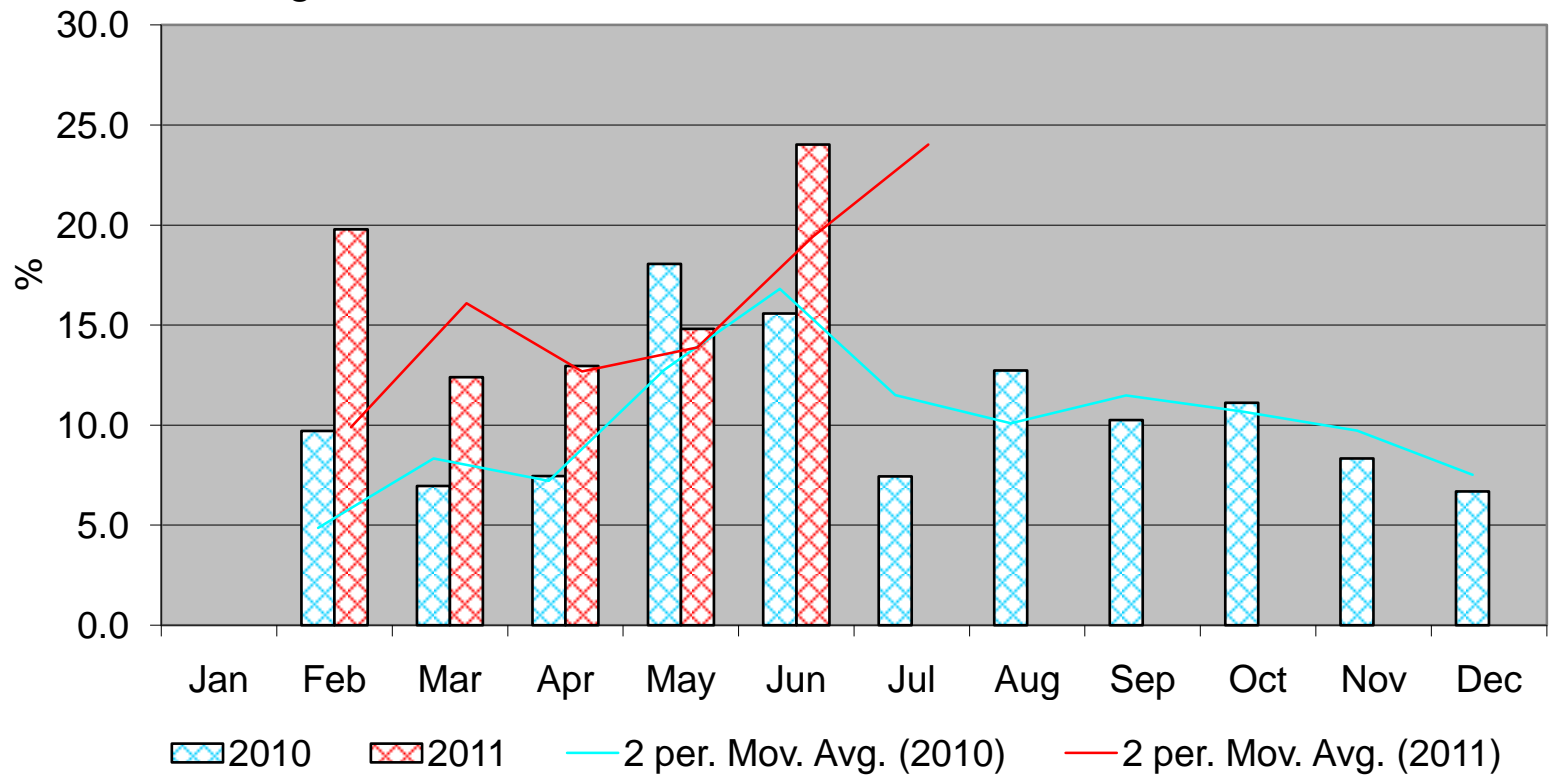
Outcome indicators	ADDUN Livelihood Zone, Summary of Findings		
	Gu'10 (N=667)	Deyr'10/11 (N=591)	Gu' 2011 (N =583)
Child Nutrition status			
o GAM (WHZ<-2 or oedema)	22.8 (19.2-27.0)	11.0 (7.7-15.5)	17.8 (13.3-23.6)
o Mean WHZ	-1.07	-0.70	-0.91
o SAM (WHZ<-3 or oedema)	7.1 (4.7-10.5)	2.5 (1.3-5.1)	4.1 (2.5-6.7)
o Oedema	0.0	0.0	0.3
o MUAC (<12.5 cm or oedema)	5.2 (2.7-7.8)	2.8 (0.2-5.4)	7.7 (5.5-10.8)
o MUAC (<11.5 cm or oedema)	0.9 (0.1-1.7)	0.6 (0.0-1.3)	1.4
o HIS Nutrition Trends	Low proportion but increasing trends,Jan-June ,10	Low proportion but increasing trends,Jan-Dec ,10	High (>15%) and increasing
o TFPs/SFPs Admission trends	High OTP admission(235), Jan-May'10	-	-
Crude death Rate/10,000/day (90days)	0.52 (0.30-0.82)	0.71 (0.41-1.20)	0.56 (0.34-0.91)
Under 5 death Rate/10,000/day (90days)	1.74 (0.88-3.41)	1.91 (0.93-3.87)	1.92 (1.02-3.59)
OVERALL NUTRITION SITUATION	Very Critical	Serious	Critical
Child Morbidity, Immunization, IYCF			
o Disease Oubreaks:	No outbreaks	No outbreaks	AWD and measles Outbreak
o Morbidity based on 2wk recall	Morbidity(45.4)	Morbidity:32.8	Morbidity : 36.7
o Immunization status/Vit. A	Meascles:51.4VitA:45.6	Meascles:71.7;VitA:74.7	MeasVac : 60.5 VitA : 48.4
o Children eating from >=4 fdgps	13.8 (7.8-19.9)	5.3 (2.1-9.7)	15.8 (6.9-24.7)
o Children meeting min. feeding freq.	46.3 (36.8-55.6)	59.4 (49.4-69.5)	38.8 (26.1-51.4)
Public Health Indicators; Gender		N=354	N=340
o Households (HH) accessing safe water	36.9	35.1	26.8
o HH accessing sanitation facilities	39.9	54.3	57.4
o Relation between GAM & child sex	Insignificant	significant	Insignificant
o Relation between GAM & sex of hh head	Insignificant	Insignificant	Insignificant
Food Security Phase	HE /AFLC	HE /AFLC	HE
Proportion of hh consuming <4 fd gps	4.8	5.5	22.6
Overall Risk to Deterioration	Uncertain	Uncertain	Uncertain

Figure: HIS Malnutrition Trends in Addun LHz



Outcome indicators	East Golis Livelihood Zone, Summary of Findings		
	Gu'10, N=214	Deyr'10/11, N=	Gu'11
Child Nutrition status			
○ GAM (WHZ<-2 or oedema)	>16.3(Pr 0.90)	11.1(8.0-15.1)	12.2 (8.5- 16.9)
○ SAM (WHZ<-3 or oedema)	>1.7 (Pr=0.90)	2.1 (1.2-3.90)	1.1 (0.0-2.7)
○ Oedema	0	0.3	0.4
○ MUAC (<12.5 cm or oedema)	5.1 (2.0-8.3)	5.8 (3.8-8.6)	5.5 (3.9-7.0)
○ MUAC (<11.5 cm or oedema)	0.5 (0.0-1.4)	0.3 (0.0-2.4)	1.2% (0.5-1.9)
○ HIS Nutrition Trends	Low proportion and increasing trend Jan-june 10	Low proportion and stable	High proportion and Increasing (>15%)
TFPs/SFPs Admission trends	N/A	N/A	N/A
Crude death Rate/10,000/day (90days)	N/A	0.13 (0.05-0.33)	0.98 (0.54-1.77)
Under 5 death Rate/10,000/day (90days)	N/A	0.30 (0.07-1.20)	1.44 (0.79 – 2.61)
OVERALL NUTRITION SITUATION	Critical	Serious	Serious
Child Morbidity, Immunization, IYCF			
○ Disease Outbreaks:	No outbreak	No outbreak	Measles Outbreak
○ Morbidity based on 2wk recall	Morbidity -38.3%	Morbidity -43.1%	Morbidity: 41.2 (36.3-46.1)
○ Immunization status/Vit. A	Measles: 72.9; Vit. A: 86.9	Measles: 77.1; Vit. A: 80.9	MeasVac: 81.8 ; VitA 77.7
○ Children eating from <4 fdgps	N/A	2.0	4.2
○ Children meeting min. feeding freq.	N/A	35.0	23.3
Public Health Indicators; Gender			
○ Households (HH) accessing safe water	N/A	49.8	15.2
○ HH accessing sanitation facilities	N/A	61.7	68.2
○ Relation between GAM & child sex	Insignificant	Insignificant	Insignificant
○ Relation between GAM & sex of hh head	Insignificant	Insignificant	Insignificant
Food Security Phase	AFLC	AFLC	AFLC
Proportion of hh consuming <4 fd grps	N/A	6.7	36.4
Overall Risk to Deterioration	Uncertain	Uncertain	Potential to deteriorate

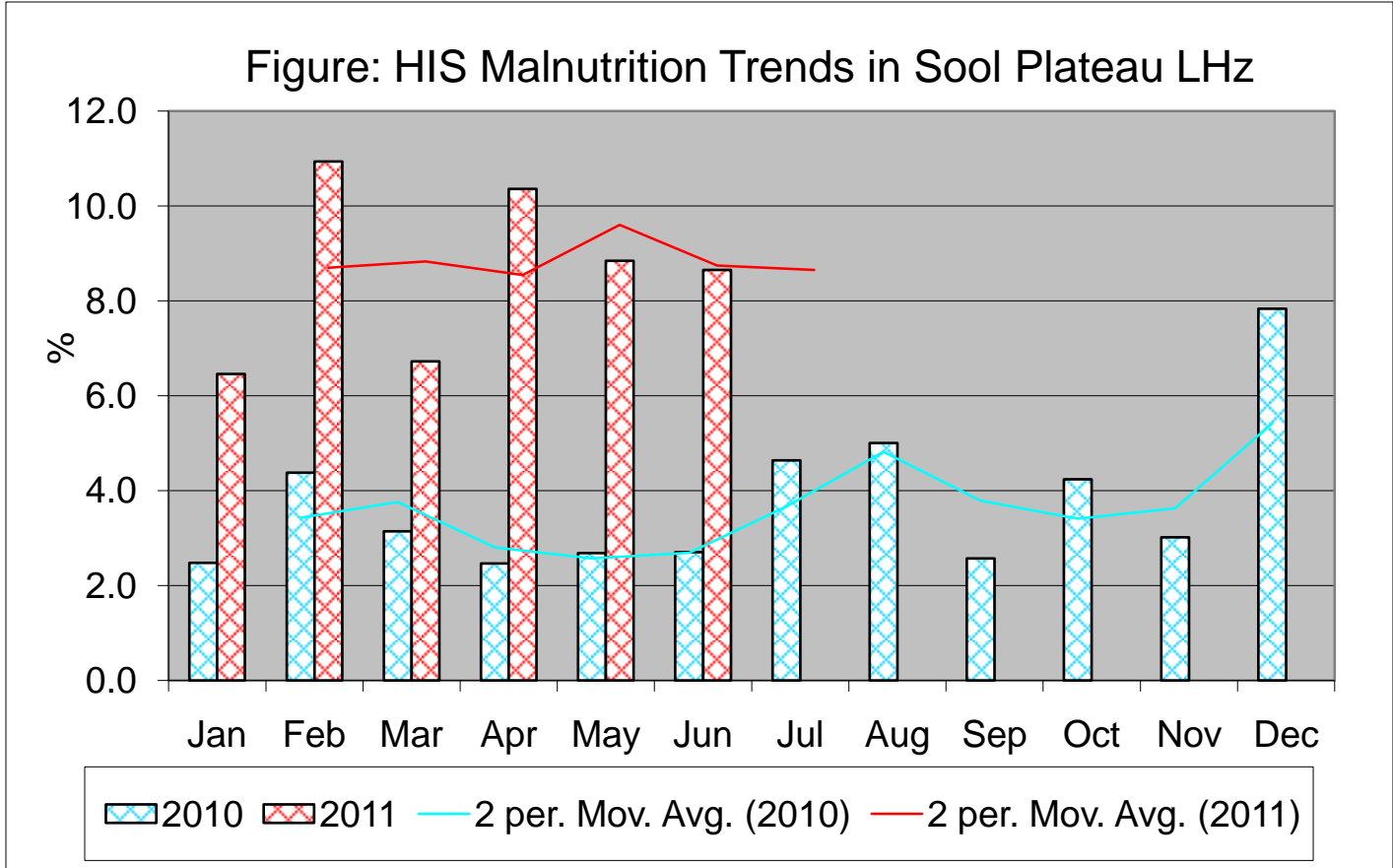
Figure: HIS Malnutrition Trends in Golis/ Karkaar LHz



Outcome indicators	Nugal Livelihood Zone, Summary of Findings		
	Gu'10 (N=200)	Deyr'10/11 (N=516)	Post Gu'11 (N= 421)
Child Nutrition status			
○ <i>GAM (WHZ<-2 or oedema)</i>	>8.8 (Pr=0.90)	10.3 (7.0-14.8)	23.2 (18.5-28.1)
○ Mean WHZ	-0.83	-0.63	-1.11±1.15
○ <i>SAM (WHZ<-3 or oedema)</i>	>0.6 (Pr=0.90)	1.0 (0.4-2.3)	6.7 (4.4-10.0)
○ <i>Oedema</i>	0.0	0.0	0.1
○ <i>MUAC (<12.5 cm or oedema)</i>	2.0 (0.1-3.9)	4.2 (2.5-6.0)	11.5 (9.1-14.5)
○ <i>MUAC (<11.5 cm or oedema)</i>	1.0(0.0-2.4)	1.2(0.3-2.0)	2.9 (1.6-5.3)
○ <i>HIS Nutrition Trends</i>	Low and decreasing trend, Jan-Jun'10	Low and decreasing trend	Low and stable trend,
○ <i>TFPs/SFPs Admission trends</i>	High OTP admission(235), Jan-	High OTP admissions	Low and stable
Crude death Rate/10,000/day (90days)	0.52 (0.30-0.82)	0.71 (0.41-1.20)	0.34 (0.14-0.82)
Under 5 death Rate/10,000/day (90days)	1.74 (0.88-3.41)	1.91 (0.93-3.87)	0.63 (0.17-2.29)
OVERALL NUTRITION SITUATION	Alert	Serious	Very critical
Child Morbidity, Immunization, IYCF			
○ <i>Disease Outbreaks:</i>		Measles outbreak	Measles outbreak
○ <i>Morbidity based on 2 wk recall</i>	Morbidity 21.5	Morbidity 40.4	Morbidity 45.3
○ <i>Immunization status/ Vit. A</i>	Measles :55.5; Vit.A;59.5	Measles :55.3; Vit.A; 52.5	Vit. A:63.7; Polio:77.6
○ <i>Children eating from <4 fgps</i>	N/A		18.2
○ <i>Children meeting min. feeding freq.</i>	N/A	22.3 (14.1-30.6)	NA
Public Health Indicators; Gender		N=302	N=421
○ <i>Households (HH) accessing safe water</i>		19.9	1.6
○ <i>HH accessing sanitation facilities</i>	N/A	30.3	27.0
○ <i>Relation between GAM & child sex</i>	Insignificant	Insignificant	Insignificant
○ <i>Relation between GAM & sex of hh head</i>	Insignificant	Insignificant	Insignificant
Food Security Phase	BFI	BFI	AFLC 2.0
Dietary diversity			
<i>Proportion of hh consuming <4 fd gps</i>	N/A	17.3 (9.5-25.1)	
Overall Risk to Deterioration	Stable	Deteriorating	Uncertain

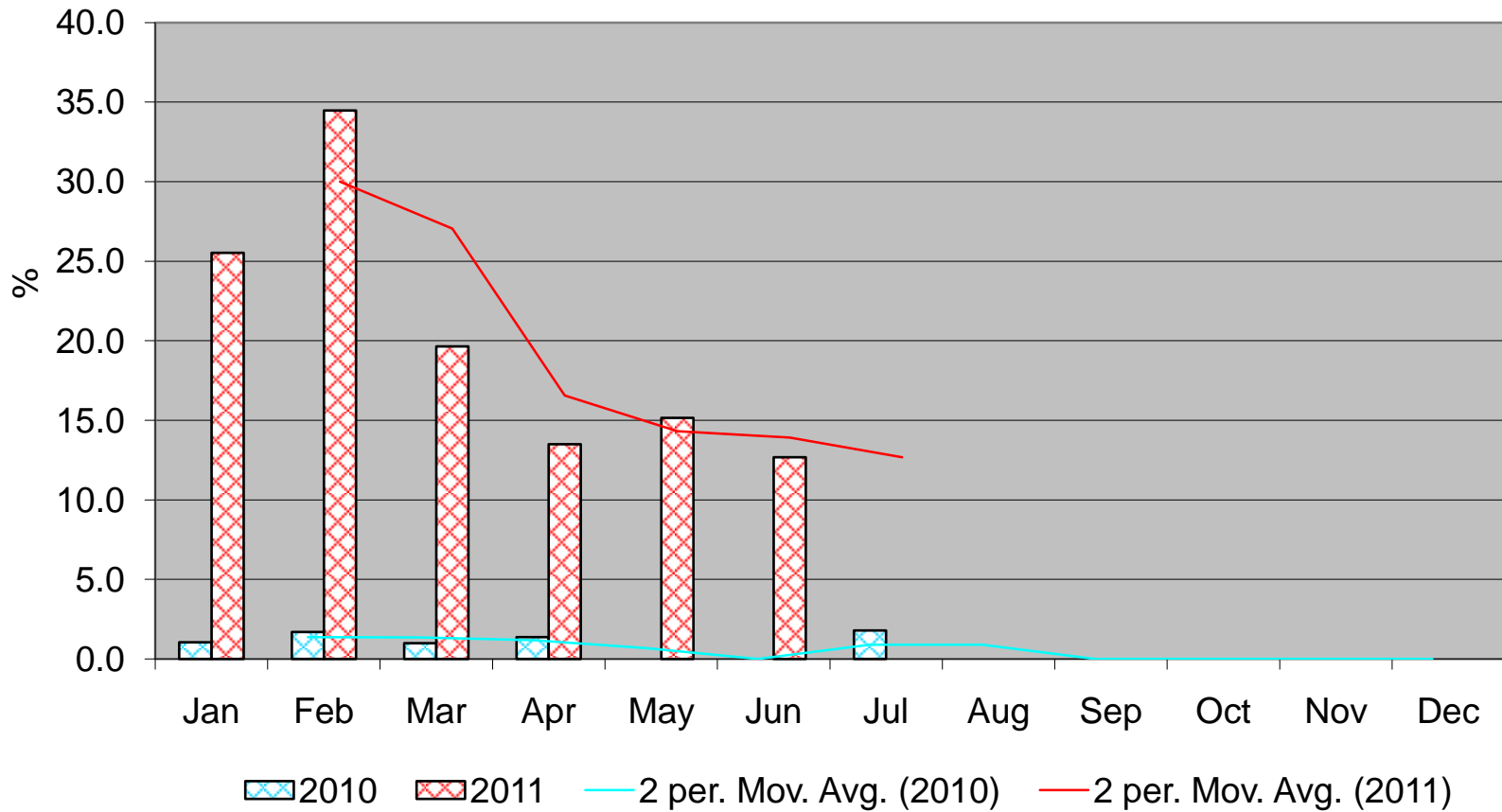
Outcome indicators	Sool Plateau Livelihood Zone, Summary of Findings		
	Gu'10 (N=200)	Deyr '10/11 (N= 637)	Gu '11 (N= 629)
Child Nutrition status			
o GAM (WHZ<-2 or oedema)	>5.0 (Pr=0.90)	8.3 (6.0-11.4)	15.9 (13.6-18.4)
o SAM (WHZ<-3 or oedema)	>0.6 (Pr=0.90)	1.6 (0.8-3.1)	4.0 (2.9-5.4)
o Mean weight- for- height	-0.50	-0.46	-0.73±1.26
o Oedema	0	0.6	1.0
o MUAC (<12.5 cm or oedema)	2.0 (0.7-4.0)	2.9 (1.7-5.0)	10.0 (7.1-14.0)
o MUAC (<11.5 cm or oedema)	0	1.3 (0.5-3.1)	3.3 (1.9- 5.7)
o HIS Nutrition Trends	Low proportion and stable	10-15% and stable trend	Fluctuating
o TFPs/SFPs Admission trends	N/A	Increasing trend	
• Crude death Rate/10,000/day (90days)	N/A	0.45 (0.25-0.80)	0.39 (0.21-0.74)
• Under 5 death Rate/10,000/day (90days)	N/A	1.11 (0.49-2.47)	0.41 (0.13-1.30)
OVERALL NUTRITION SITUATION	Alert	Alert	Critical
Child Morbidity, Immunization, IYCF			
o Disease Oubreaks:	No outbreak	No outbreaks	Measles Outbreak
o Morbidity based on 2wk recall	Morbidity -19.5	48.9	Morbidity 27.8
o Immunization status/Vit. A	Measles: 69.5; Vit. A: 78.5	Vit A – 60.6, Measles- 68.9	Measles vac: 79.2, VitA 78.1
o Children eating from <4 fdgps	N/A	24.3	19.2
o Children meeting min. feeding freq.	N/A	47.6	78.1
Public Health Indicators;		N=373	N=399
o Households (HH) accessing safe water	N/A	22.4	14.0
o HH accessing sanitation facilities	N/A	66.1	60.2
Gender			
o Relation between GAM & child sex	Insignificant	Insignificant	Insignificant
o Relation between GAM & sex of hh head	Insignificant	Insignificant	Insignificant
Food Security Phase	BFI	HE	HE
Proportion of hh consuming <4 fd gps		10.1	2.1
Overall Risk to Deterioration	STABLE	STABLE	Potential to deteriorate

Figure: HIS Malnutrition Trends in Sool Plateau LHz



Outcome indicators	Coastal Deeh Livelihood Zone, NEZ Summary of Findings		
	Gu'10, N=199	Deyr'10/11 (N=670)	Gu'11 (N= 599)
Child Nutrition status			
○ <i>GAM (WHZ<-2 or oedema)</i>	>10.8(Pr=0.90)	12.5 (10.5-14.9)	17.4 (13.8 –21.6)
○ <i>SAM (WHZ<-3 or oedema)</i>	>2.2 (Pr=0.90)	2.8 (1.7-4.6)	4.2 (2.7 –6.4)
○ <i>Oedema</i>	0.0	0.6	0.3
○ <i>MUAC (<12.5 cm or oedema)</i>	6.5(2.9-10.1)	6.5(2.9-10.1)	10.4 (7.3 –14.5)
○ <i>MUAC (<11.5 cm or oedema)</i>	2.5(0.4-4.6)	2.5(0.4-4.6)	2.3 (1.3 –4.2)
○ <i>HIS Nutrition Trends</i>	<10% and stable	N/A	High proportion but decreasing
Crude death Rate/10,000/day (90days)	N/A	0.38 (0.20-0.70)	0.78 (0.57-1.35)
Under 5 death Rate/10,000/day (90days)	N/A	1.01 90.51-2.00	1.15 (0.58-2.25)
OVERALL NUTRITION SITUATION	Serious	Serious	Critical
Child Morbidity, Immunization, IYCF			
○ <i>Disease Oubreaks:</i>	No outbreak	No outbreak	Measles and AWD Outbreak
○ <i>Morbidity based on 2wk recall</i>	Morbidity- 23.7	Morbidity- 46.2(36.3-56.1)	Morbidity 48.6
○ <i>Immunization status/Vit. A</i>	Meascles ;86.4 ;Vit A:94.5	Meascles ;79.3;Vit A:	MeasVac 57.8, VitA 52.3
○ <i>Children eating from <4 fdgps</i>			27.6
○ <i>Children meeting min. feeding freq.</i>			51.3
○ <i>Households (HH) accessing safe water</i>	Poor water and sanitation	67.4(50.9-83.9)	72.6
○ <i>HH accessing sanitation facilities</i>		61.5(40.0-74.0)	55.3 (41.7 – 68.9)
○ <i>Relation between GAM & child sex</i>	Insignificant	Insignificant	Insignificant
○ <i>Relation between GAM & sex of hh head</i>	Insignificant	Insignificant	Insignificant
Food Security Phase	AFLC		
<i>Proportion of hh consuming <4 fd gps</i>	Poor diet, no milk available	- 2.4	HE 20.2
Overall Risk to Deterioration	Stable	Stable	Potential to deteriorate

Figure: HIS Malnutrition Trends in Coastal Deeh LHz





Key Driving & Mitigating Factors

Driving Factors

- Poor access to milk and dietary diversity
- AWD outbreak in Galgadud and Mudug regions; Measles outbreak in Nugal and Bari regions
- High morbidity in Coastal, Golis, Hawd and Addun
- Low access to safe water in Nugal, Sool plateau and Addun
- Low coverage of health programmes <80 in Coastal and Sool plateau
- Poor infrastructure in Golis, Coastal and Addun

IDPS

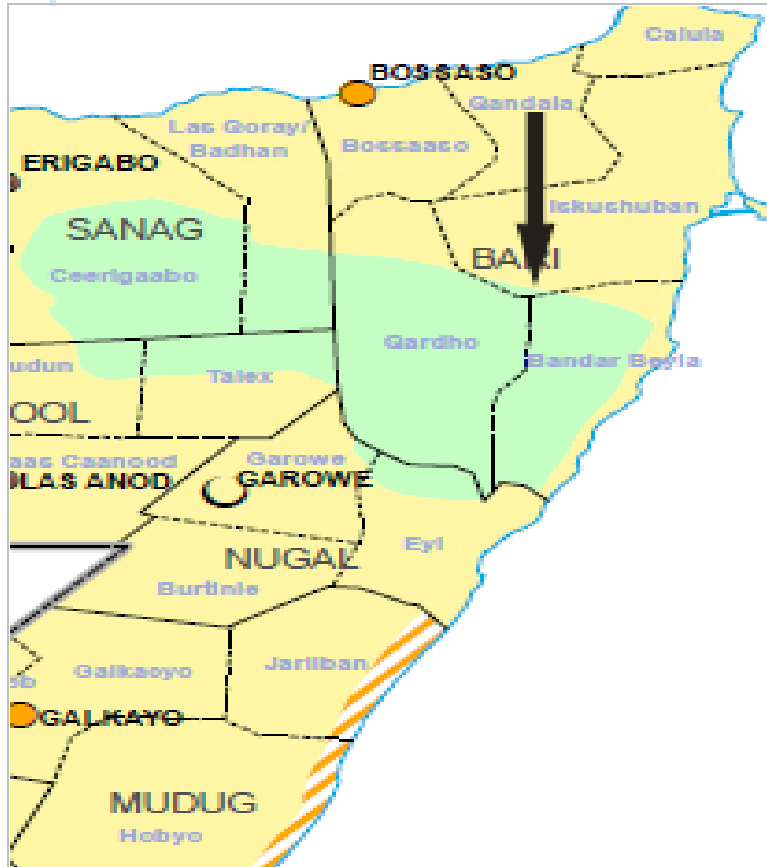
- Poor shelters
- High morbidity in Mergaga, Bosaso, Galkacayo and Garowe respectively.
- High temperature and in decreased job opportunities during Hagaa in Bossasso.

Mitigating Factors

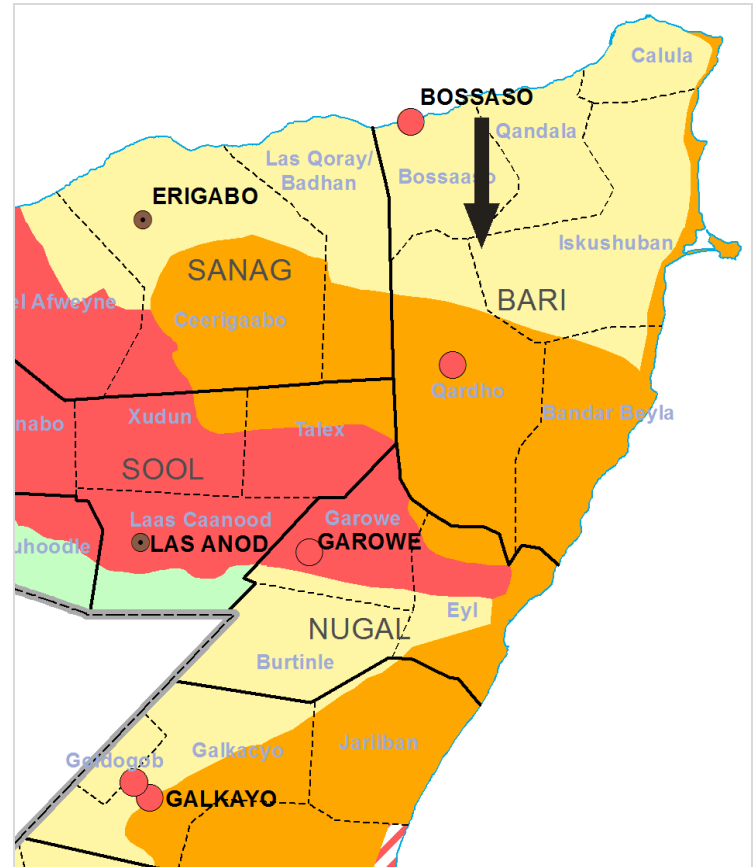
- Active social support e.g. in-kind or cash
- CHD
- Good coverage (>75%) of health programmes (polio and Vit A and Measles vaccination in some livelihoods/IDPs)

Nutrition situation

Nutrition Situation, January 2011



Nutrition Situation, July 2011



End

Northeast Nutrition Team:

Tom Oguta, Khalif Nouh, Abdikarim Ducale, Mohamed M. Hassan, Zainab Farah