



Food Security and Nutrition
Analysis Unit Somalia

Information for Better Livelihoods



Post Gu 2012

Presentation

August 21, 2012



Integrated Nutrition Situation Analysis

Northwest - Somaliland



EUROPEAN COMMISSION



Main Livelihood Zones

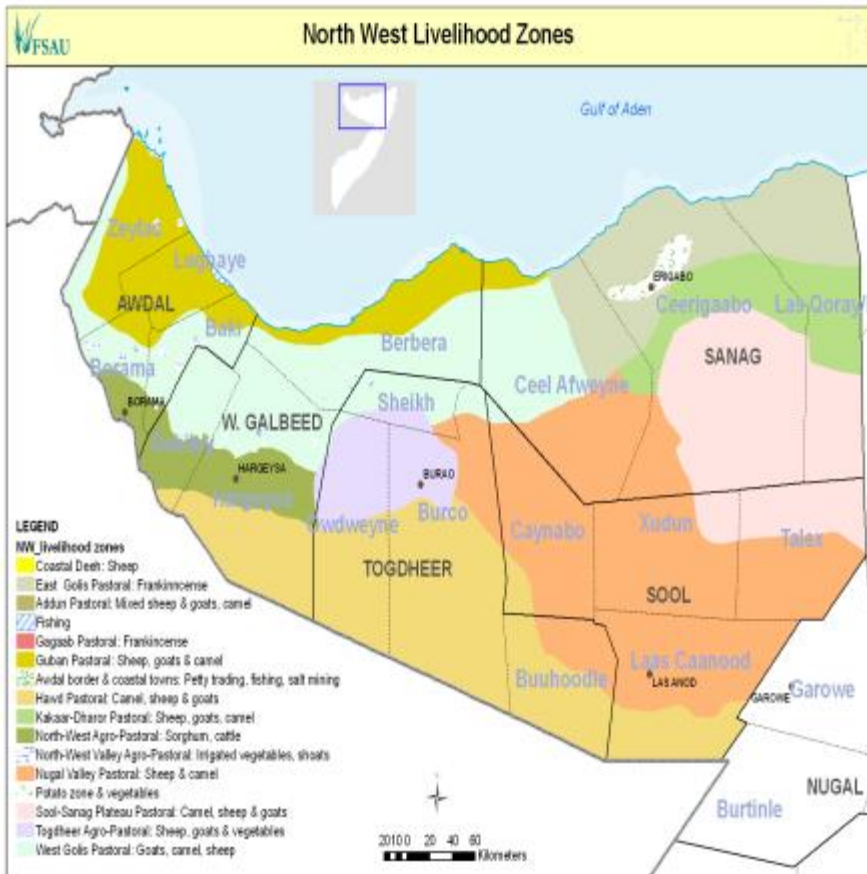
Livelihood Groups & Main Sources of Food and Income

4 Pastoral Livelihoods (*Hawd, Sool Plateau, Nugaal Valley, and Golis/Guban Pastoralists*)

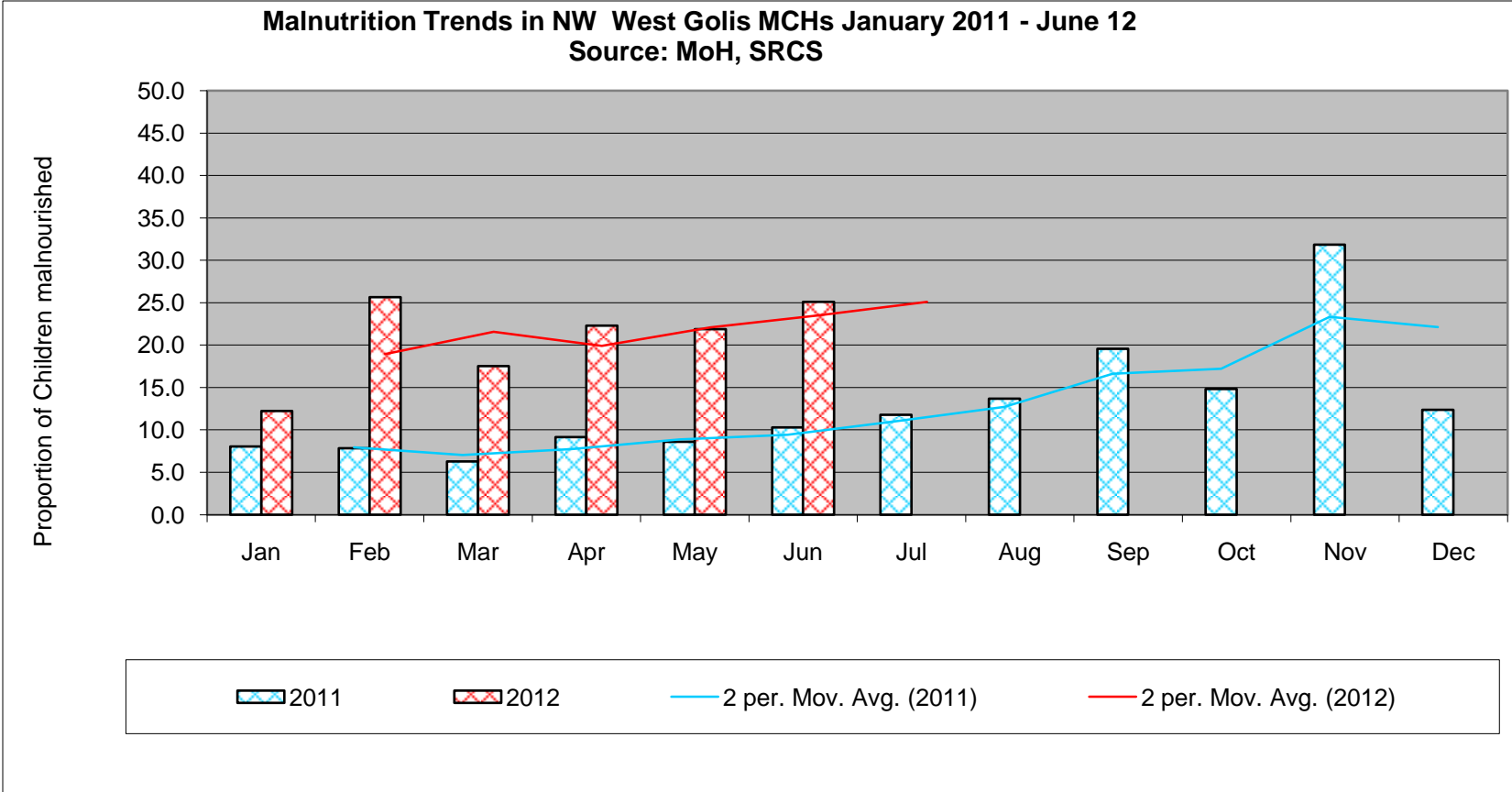
- ❑ Primary sources of income of poor: sale of livestock & livestock products
- ❑ Primary sources of food of poor: purchase and own production
- ❑ Primary livelihood asset of poor: camel, sheep/goat

Agro-pastoral Livelihoods (*Togdheer and Northwest Agro-pastoral*)

- ❑ **Togdheer Agro-Pastoral** are more pastoral, however there is an increasing dependency on crop and fodder production. Main sources of income: sale of livestock & livestock products, self-employment and fodder sales.
 - **Main source of food:** Own crop and food purchase
- ❑ **Northwest Agro-pastoral** are more agriculturists than pastoralists. Main sources of income: sale of crops, livestock products and labour;
 - **Main sources of food:** own crop production and purchase.



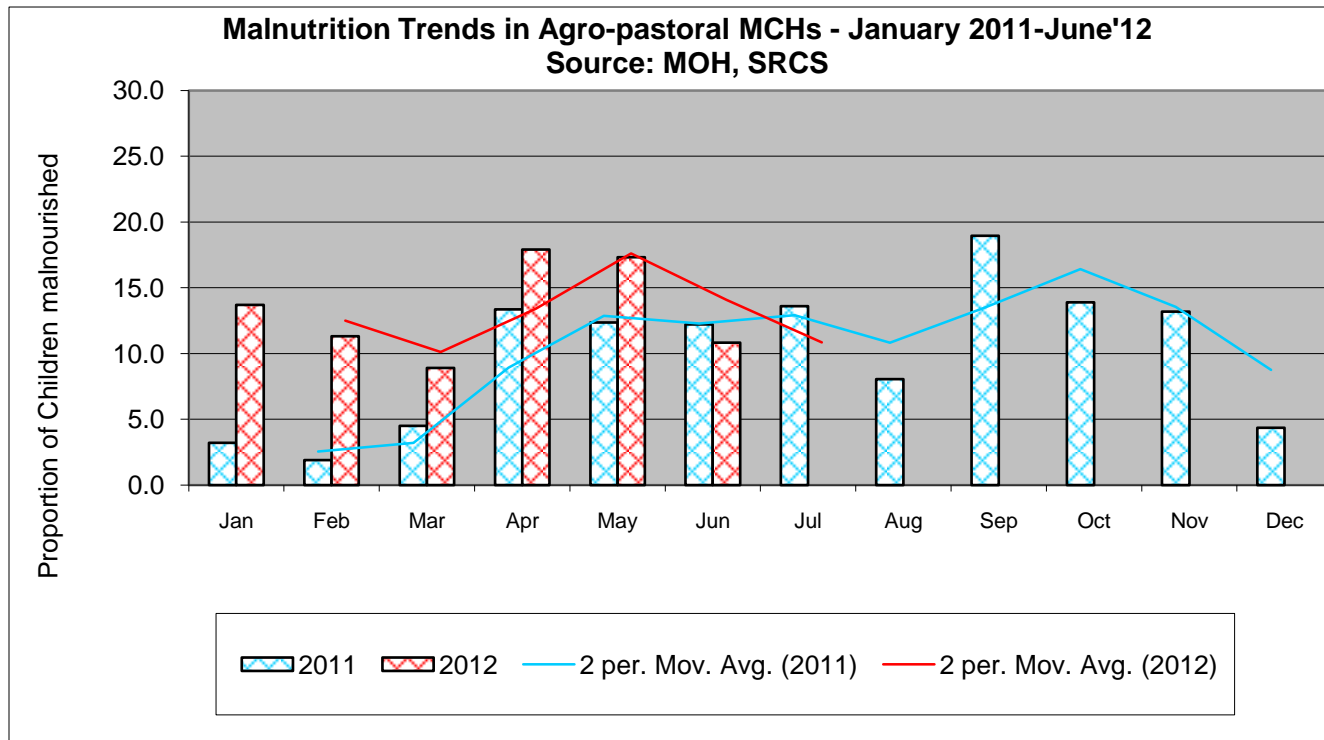
Outcome indicators	WEST GOLIS/GUBAN Livelihood Zone, Summary of Findings		
	Gu '11 (N=844) July 2011	Deyr'11/12 (N=819) December 2011	Gu 2012 (N=588) July 2012
Child Nutrition status			
o GAM (WHZ<-2 or oedema)	22.0 (18.9-25.4)	13.8 (11.4-16.6)	21.7 (17.9-26.1)
o SAM (WHZ<-3 or oedema)	5.0 (3.4-7.0)	2.2 (1.4-3.5)	5.6(3.7-7.9)
o Oedema	0.1	0.1	0
o Mean Weight-for Height Z (WHZ scores)	-1.12± 1.12	-0.72±1.21	-1.06±1.15
o MUAC (<12.5 cm or oedema)	7.0 (4.2-11.3)	4.9 (3.4-6.9)	6.5 (4.5-9.2)
o Severe MUAC (<11.5cm)	2.3 (0.9-5.3)	0.5 (0.2-1.3)	1.2 (0.5-2.7)
o Malnutrition Trends at Health Facilities	High (>15%) and fluctuating	High (>15%) and fluctuating	High (>20%) and stable
o TFPs/SFPs Admission trends	High and fluctuating	High and decreasing	High and increasing
Crude death Rate/10,000/day (90days)	0.77 (0.43-1.37)	0.54 (0.33-0.89)	0.24 (0.11-0.53)
Under 5 death Rate/10,000/day (90days)	0.91(0.39-2.09)	0.27 (0.06-1.13)	0.45 (0.10-1.89)
Non-pregnant women with MUAC <18.5 cm	0.9 (0.0-1.9)	0.7(0.1-2.4)	0
Pregnant & Lactating women with MUAC<21.0 cm	6.8 (2.8-10.7)	0.4 (0.0-2.4)	4.6 (0.0-13.9)
Pregnant & Lactating women with MUAC<23.0 cm	17.8 (11.6-24.0)	16.5 (11.9-21.9)	28.1 (8.6-47.6)
OVERALL NUTRITION SITUATION	Very Critical	Serious	Very Critical
Child Morbidity, Immunization, IYCF			
o Disease Outbreaks:	No Outbreak	No outbreak	No outbreak
o Morbidity based on 2wk recall	Overall morbidity,24.9; Diarrhea,15.6; Pnuamonia,3.8; Fever,10.5; measles,1.5	Overall morbidity:29.7 Diarrhea:18.2 Pneumonia:3.7 measles:1.1 Fever:19.7	Overall morbidity:29.7 Diarrhea:12.9 Pneumonia:3.9; Measles 2.7 Fever:18.7
o Immunization status/Vit. A	Vit.A:50.2; Measles vac:81.3; Polio:94.5	Vit A: 63.2 Polio:82.7 Measles Vac:65.1	Vit A: 72.8 Measles Vac; 75.3
o Children eating from <4 fdgps	94.8	98	100
o Children meeting min. feeding freq.	56.0	35.8	38.8
Public Health Indicators; Gender	N=627	N=509	N=349
o Households (HH) accessing safe water	49.5	63.2	39.8
o HH accessing sanitation facilities	31.1	43.2	40.4
o Relation between GAM & child sex	Statistically insignificant	Statistically insignificant	Statistically insignificant
o Relation between GAM & sex of hh head	Statistically insignificant	Statistically insignificant	Statistically insignificant
Proportion of hh consuming <4 fd gps	4.0	58.7	12.9
Mean Coping Strategy Index (CSI)	10.7	9.7	7.0
Food Security Phase	Stressed	Stressed	Crisis
Overall Risk to Deterioration	POTENTIAL TO IMPROVE	STABLE	UNSTABLE



High (>20%) and stable trend

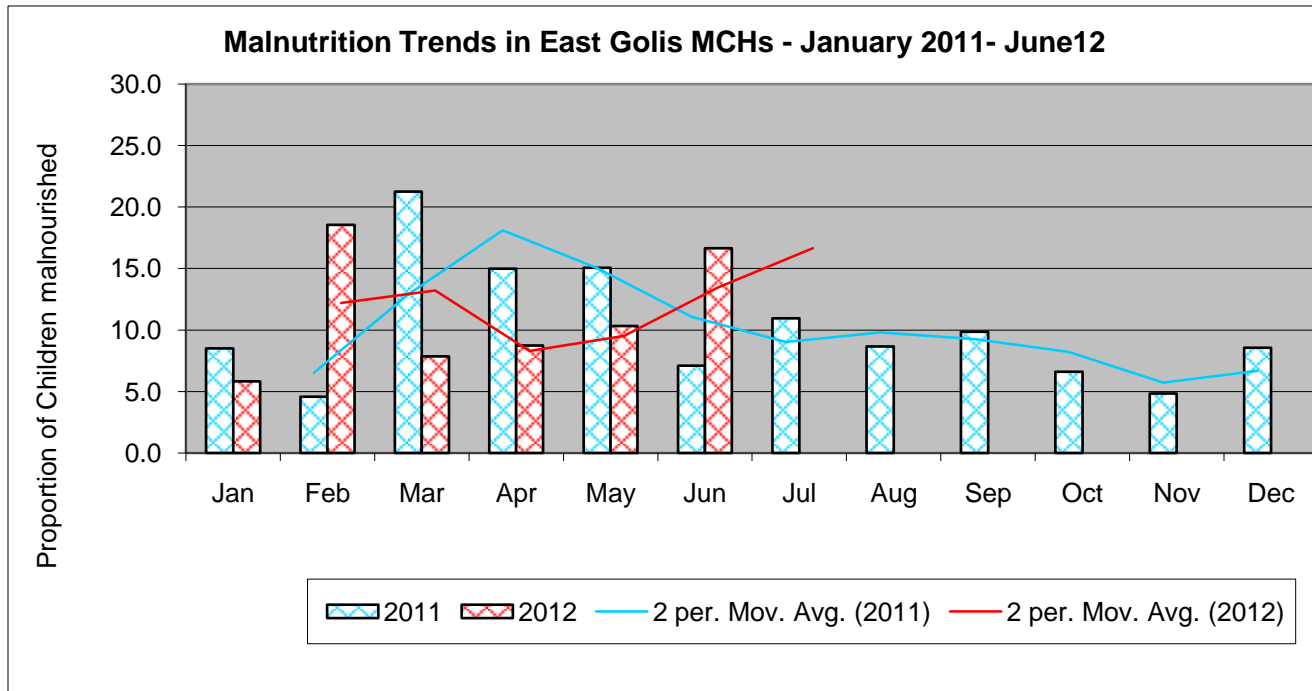
AGRO-PASTORAL OF NORTH WEST, Summary of Findings

Outcome indicators	Gu '11 (N= 684) July 2011	Deyr '11/12 (N=661) December 2011	Gu 12 (N=451) July 2012
Child Nutrition status			
○ <i>GAM (WHZ<-2 or oedema)</i>	11.9 (8.5-15.4)	10.1(7.1-14.1)	13.5 (10.3-17.3)
○ <i>SAM (WHZ<-3 or oedema)</i>	0.6 (0.3-1.9)	2.6 (1.4-4.9)	1.1 (0.5-2.6)
○ <i>Mean Weight-for-height Z (WHZ)</i>	-0.56±1.13	-0.66±1.11	-0.68±1.60
○ <i>Oedema</i>	0	0	0
○ <i>MUAC (<12.5 cm or oedema)</i>	3.1(1.6-5.9)	4.4 (2.7-7.0)	2.2 (1.2-4.2)
○ <i>Severe MUAC (<11.5 cm)</i>	0.9 (0.3–2.7)	0.5 (0.1-1.4)	0.2 (0.0-1.7)
○ <i>Malnutrition Trends at Health Facilities</i>	Low (<10%) and decreasing	High (>10%) and decreasing	High (>10%) and fluctuating
○ <i>TFPs/SFPs Admission trends</i>	High and decreasing	High and decreasing	High and decreasing
Crude death Rate/10,000/day (90days)	0.23 (0.12-0.45)	0.05 (0.0-0.1)	0.21 (0.05-79)
Under 5 death Rate/10,000/day (90days)	0.53 (0.21-1.38)	0.28 (0.15-0.53)	0.36 (0.09-1.52)
Non-pregnant women with MUAC <18.5 cm	0.5 (0.0-1.5)	1.0 (0.0-2.5)	0
Pregnant & Lactating women with MUAC<21.0 cm	2.8 (0.5-5.1)	5.9 (0.0-15.1)	0.8 (0.0-2.5)
Pregnant & Lactating women with MUAC<23.0 cm	6.3 (2.9-9.6)	22.3(2.9-41.8)	6.5 (0.9-12.0)
OVERALL NUTRITION SITUATION	Serious	Serious	Serious
Child Morbidity, Immunization, IYCF			
○ <i>Disease Outbreaks:</i>	No outbreak:	No outbreak:	No outbreak
○ <i>Morbidity based on 2wk recall</i>	Overall morbidity, 19.3; Diarrhea- 9.6; Pneumonia, 4.7	Overall morbidity,24.6; Diarrhea- 10.6; Pneumonia, 11.7 ;Measles, 1.4	Morbidity 12.2 Pneumonia= 1.6 Diarrhea 5.6 Fever= 4.7 Measles= 0.4
○ <i>Immunization status/Vit. A</i>	Vit-A 64.6, Measles Vac. 71.1	Vit-A, 52; Measles Vac.45.5	Vitamin A= 64.5 Measles Vacc= 66.7
○ <i>Children eating from <4 fdgps</i>	98.8	96.2	95.4
○ <i>Children meeting min. feeding freq.</i>	50.0	41.9	45.8
Public Health Indicators; Gender	N=517	N=388	N=269
○ <i>Households (HH) accessing safe water</i>	7.7	8.2	8.6
○ <i>HH accessing sanitation facilities</i>	22.1	25.5	15.2
○ <i>Relation between GAM & child sex</i>	Statistically insignificant	Statistically insignificant	Statistically insignificant
○ <i>Relation between GAM & sex of hh head</i>	Statistically insignificant	Statistically insignificant	Statistically insignificant
<i>Proportion of hh consuming <4 fd gps</i>	98.8	83.8	10.4
Mean Coping Strategy Index (CSI)	13.1	13.3	6.8
Food Security Phase	Stressed	Stressed	Stressed
Overall Risk to Deterioration	STABLE	STABLE	STABLE



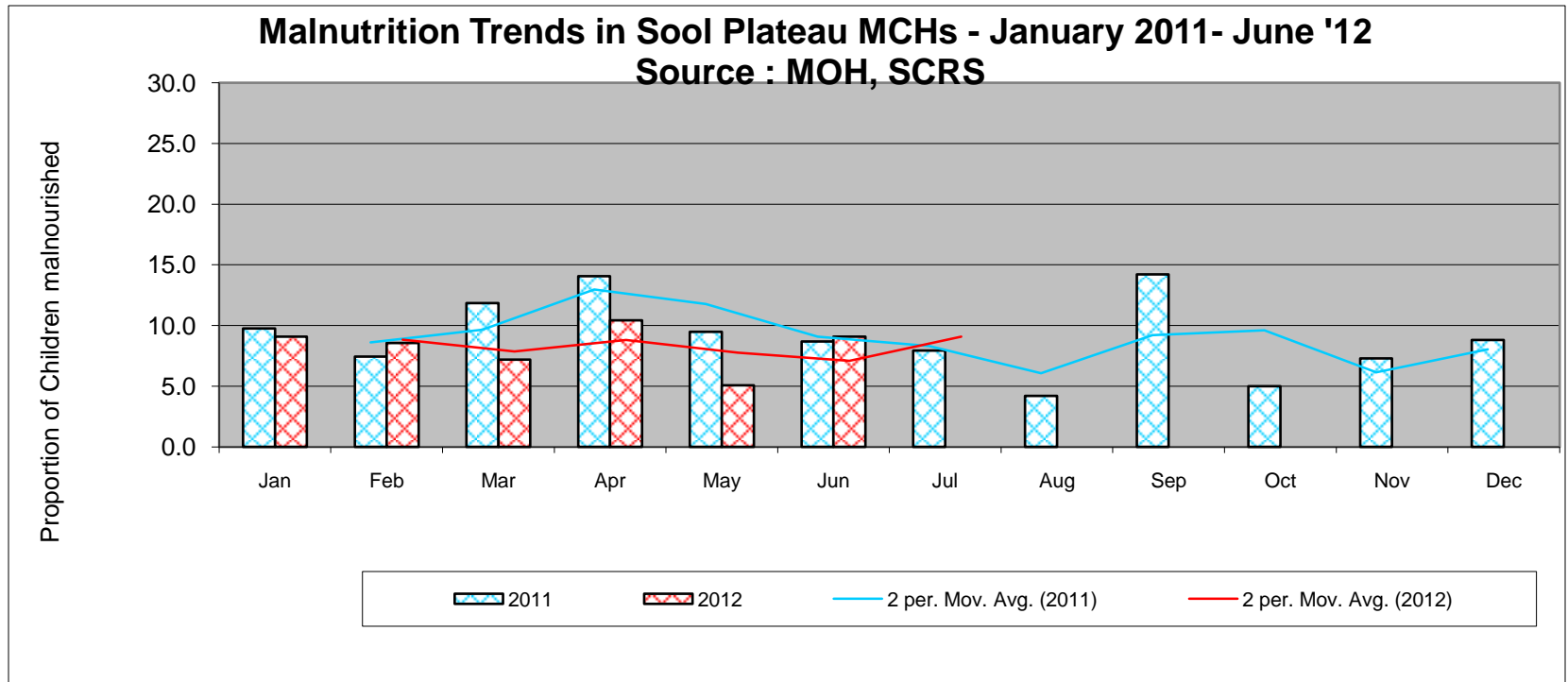
High (>10%) and fluctuating trend

EAST GOLIS/GEGBI VALLEY Livelihood Zone, Summary of Findings			
Outcome indicators	Gu'11 (N=727) July 2011	Deyr'11/12 (N=476) December 2011	Post Gu 2012; (N= 504) July 2012
Child Nutrition status			
o GAM (WHZ<-2 or oedema)	12.2 (8.5-16.9)	10.5 (7.4-14.7)	13.6 (10.5-17.5)
o SAM (WHZ<-3 or oedema)	1.1(0.0-2.7)	0.8 (0.3-2.8)	2.6 (1.5-4.5)
o Mean Weight-for height WHZ score	-0.81±1.03	-0.57±1.15	-0.69±1.14
o Oedema	0.4	0	0.2
o MUAC (<12.5 cm or oedema)	5.5 (3.9-7.0)	6.7 (3.5-12.7)	4.8 (3.2-7.1)
o Severe MUAC (<11.5 cm)	1.2 (0.5-1.9)	1.9 (0.8-4.2)	0.8 (0.3-2.0)
o Malnutrition Trends at Health Facilities	High (>10%) and decreasing	Low (<10%) and fluctuating	High (>10%) and increasing
o TFPs/SFPs Admission trends	High and decreasing numbers	Low and decreasing numbers	High and decreasing numbers
Crude death Rate/10,000/day (90days)	0.98 (0.54-1.77)	0.59 (0.27-1.27)	0.18 (0.06-0.49)
Under 5 death Rate/10,000/day (90days)	1.44 (0.79-2.61)	0.75 (0.28-2.00)	0.36 (0.09-1.52)
Non-pregnant women with MUAC <18.5 cm	0	0.5 (0.0-1.4)	0
Pregnant & Lactating women with MUAC<21.0 cm	2.4 (0.0-5.3)	9.0 (0.0-20.6)	2.4 (0.0-7.5)
Pregnant & Lactating women with MUAC<23.0 cm	23.5 (13.8-33.2)	21.0 (3.5-38.5)	14.6 (10.0-35)
OVERALL NUTRITION SITUATION	Serious	Serious	Serious
Child Morbidity, Immunization, IYCF			
o Disease Outbreaks: o Morbidity based on 2wk recall	Measles out break reported: Morbidity, 41.2; Diarrhoea 16.6; Measles, 7.0	No outbreak. Morbidity, 16.7; Diarrhea:9.2 Pneumonia:4.6 Fever:6.3; Measles:2.1	No disease outbreak •Morbidity:12.3; Diar:5.8 •Pneumonia:3.4; Measles:2.4; Fever:3.4
o Immunization status/Vit. A	Vitamin A; 77.7; Measles Vac 81.8	VitA:59.0; Measles vac:57.4	VitA:66.4, Measles:64.1
o Children eating from <4 fdgps	95.8	100	100
o Children meeting min. feeding freq.	23.3	54.2	51.1
Public Health Indicators; Gender	N=536	N=306	N=271
o Households (HH) accessing safe water	15.2	20.9	2.2
o HH accessing sanitation facilities	68.2	18.0	28.4
o Relation between GAM & child sex	Statistically insignificant	Statistically insignificant	Statistically insignificant
o Relation between GAM & sex of hh head	Statistically insignificant	Statistically insignificant	Statistically insignificant
Proportion of hh consuming <4 fd gps	36.4	12.7	1.8
Mean Coping Strategy Index (CSI)	16.7	9.7	7.9
Food Security Phase	Crisis	Crisis	Stressed
Overall Risk to Deterioration	POTENTIAL TO DETERIORATE	STABLE	STABLE



High (>10%) and increasing trend

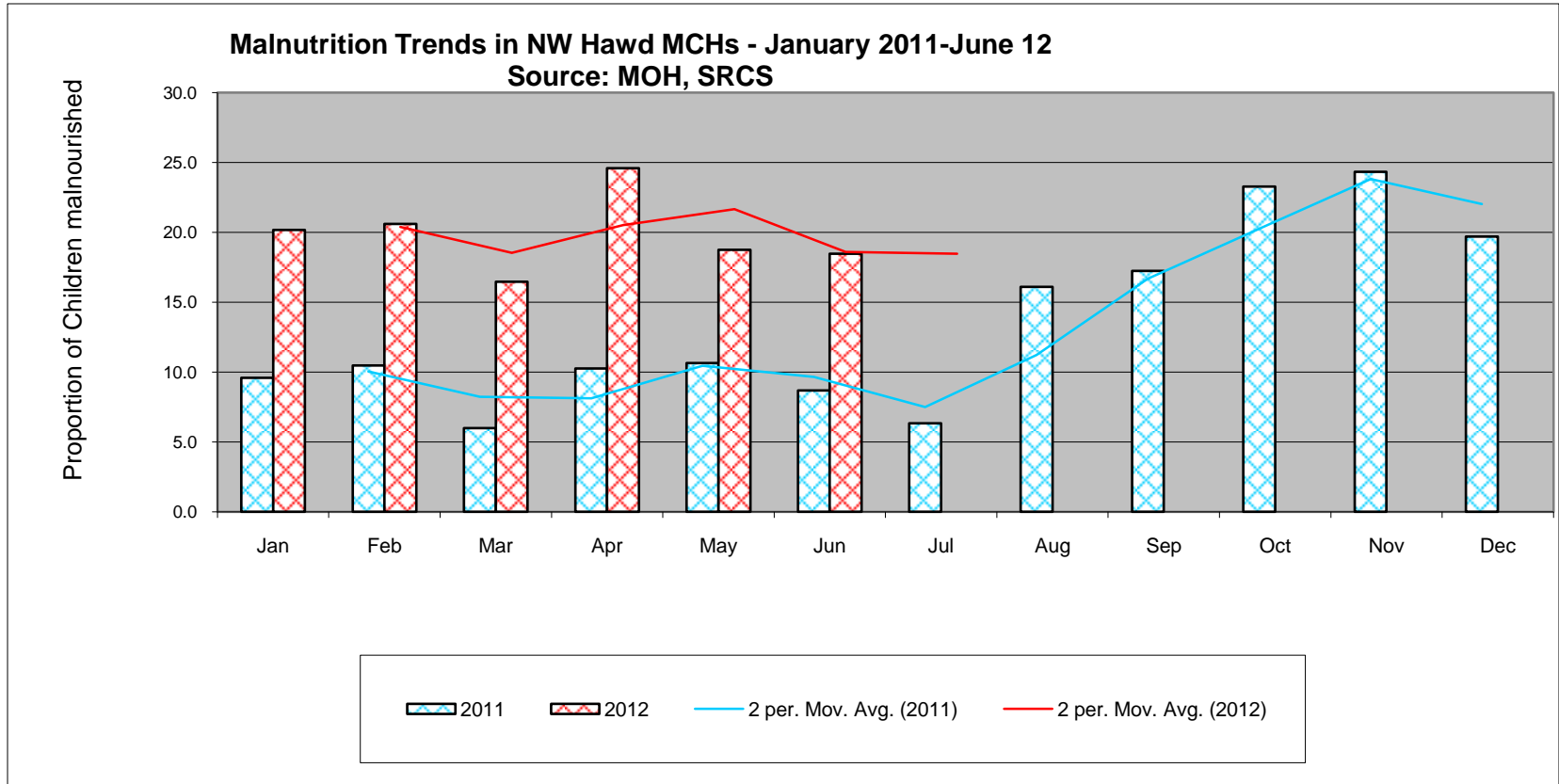
Outcome indicators	SOOL PLATEAU Livelihood Zone, Summary of Findings		
	Gu '11 (N=629) July 2011	Deyr '11/12 (N=654) December 2011	Gu 2012 (N=748) July 2012
Child Nutrition status			
o GAM (WHZ<-2 or oedema)	15.9 (13.6-18.4)	11.6 (8.7-15.3)	11.3 (9.3-13.8)
o SAM (WHZ<-3 or oedema)	4.0 (2.9- 5.4)	3.4 (2.0-5.7)	1.7(0.9-3.0)
o Mean weight-for-height	-0.73±1.26	-0.55±1.19	-0.67±1.08
o Oedema	1.0 (0.3-3.0)	1.2	0
o MUAC (<12.5 cm or oedema)	10.0 (7.1-14.0)	5.2 (3.2-8.5)	2.7(1.7-4.1)
o Severe MUAC (<11.5cm)	3.3 (1.9- 5.7)	1.5 (0.9-2.7)	0.5 (0.2-1.3)
o Malnutrition Trends at Health Facilities	High >15%) and increasing	Low(<10%) and fluctuating	Low(<10%) and fluctuating
o TFPs/SFPs Admission trends	High and increasing	Low and fluctuating numbers	Low and stable numbers
Crude death Rate/10,000/day (90days)	0.39 (0.21-0.74)	0.48 (0.22-1.06)	0.12 (0.05-0.31)
Under 5 death Rate/10,000/day (90days)	0.41 (0.13-1.30)	1.22 (0.19-7.31)	0.40 (0.13-1.24)
Non-pregnant women with MUAC <18.5 cm	0.6	0.4 (0.1-1.3)	0
Pregnant & Lactating women with MUAC<21.0 cm	6.5 (2.3-10.6)	5.3 (0.1-11.5)	0
Pregnant & Lactating women with MUAC<23.0 cm	22.8(11.0-34.7)	21.1(13.2-28.9)	0
OVERALL NUTRITION SITUATION	Critical	Serious	Serious
Child Morbidity, Immunization, IYCF			
o Disease Outbreaks: o Morbidity based on 2wk recall	No Outbreak Morbidity, 27.8; Diarrhea:13.2 ; Pneumonia,8.1; Measles,4.7	No Outbreak Morbidity, 32.3, Diarrhea:9.2 Pneumonia,10.1 Measles,7.4	•No outbreak •Morbidity:22.3 •Diarr:7.8 •Pneumonia:6.4 •Measles:2.8
o Immunization status/Vit. A	Vit.A, 78.1 Polio: 86.5 Measles:79.2	Vit-A,64.2 Measles: 63.1; polio, 76.3	Vit A:78.3 Measles vacc: 74.5
o Children eating from <4 fdgps	80.8	78.2	95.6
o Children meeting min. feeding freq.	78.1	44.1	29.1
Public Health Indicators; Gender	N=399	N=396	N=425
o Households (HH) accessing safe water	14.0	33.6	10.2
o HH accessing sanitation facilities	14.0	68.7	67.5
o Relation between GAM & child sex	Statistically insignificant	Statistically insignificant	Statistically insignificant
o Relation between GAM & sex of hh head	Statistically insignificant	Statistically insignificant	Statistically insignificant
Proportion of hh consuming <4 fd gps	2.0	15.2	1.6
Mean Coping Strategy Index (CSI)	13.6		6.7
Food Security Phase	Emergency	Crisis	Stressed
Overall Risk to Deterioration	POTENTIAL TO DETERIORATE	Stable	Stable



Low (<10%) and stable trend

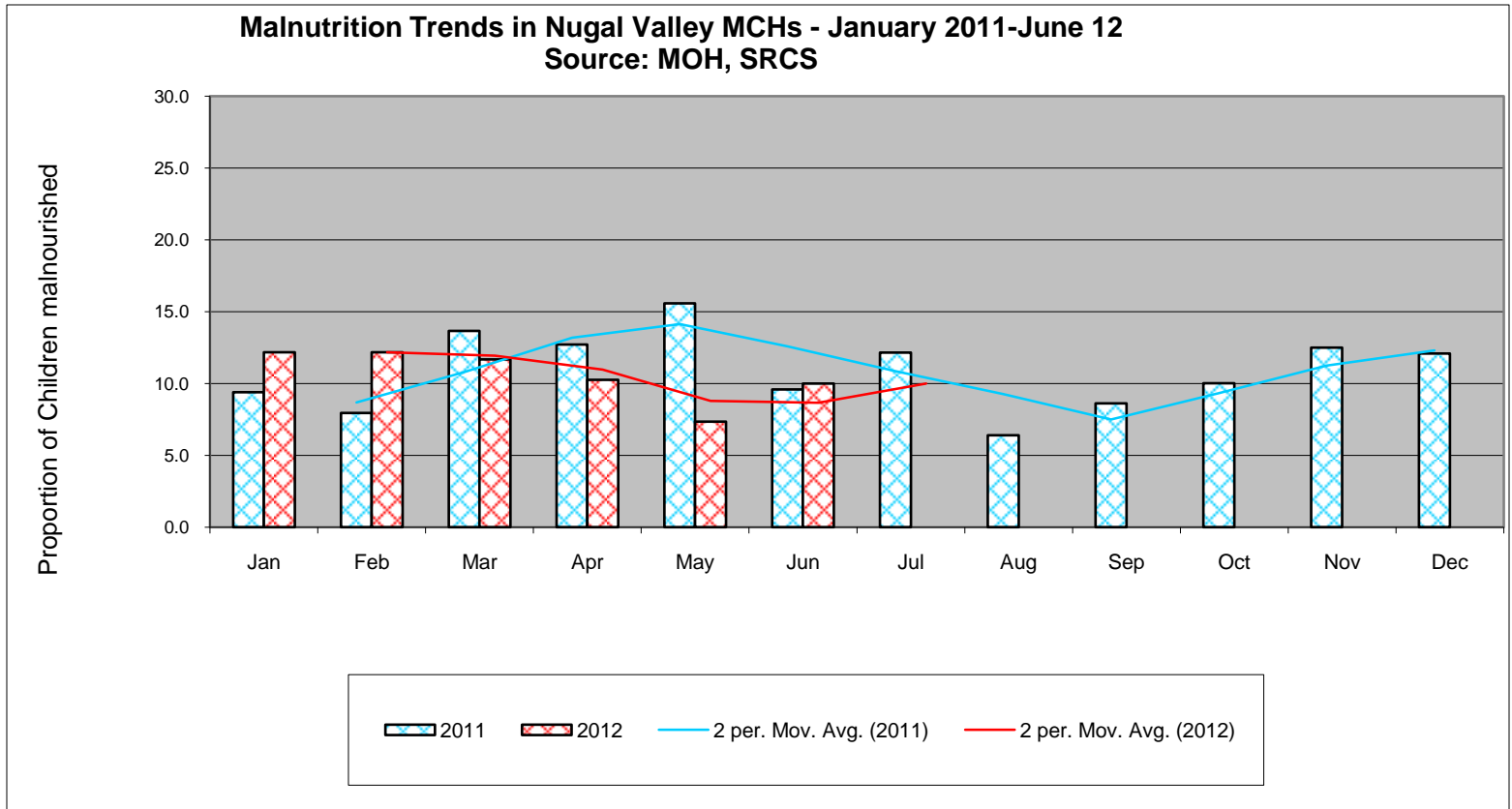
Outcome indicators	HAWD Livelihood Zone, Summary of Findings		
	GU'011 (N=614) July 2011	Deyr '11/12 (N=448) December 2011	Post Gu 2012 (N=410) August 2012
Child Nutrition status			
o GAM (WHZ<-2 or oedema)	6.2 (4.3-8.8)	10.7 (8.4-13.6)	16.7 (11.5-23.5)
o SAM (WHZ<-3 or oedema)	0.3 (0.1-1.4)	1.8 (0.9-3.6)	4.2 (2.3-76)
o Mean Weight-for-height Z (WHZ)	-0.4±1.18	-0.46±1.15	-90±1.14
o Oedema	0.3	0.2	0
o MUAC (<12.5 cm or oedema)	6.0 (3.4 –10.3)	5.3 (3.0-9.4)	5.6 (3.6-8.7)
o Severe MUAC (<11.5 cm)	0	0	0
o Malnutrition Trends at Health Facilities	Low (<10%)and fluctuating	High (>15%) and fluctuating	High (>15%) and stable trend
o TFPs/SFPs Admission trends	Low and increasing numbers	Low and fluctuating numbers	High and stable
Crude death Rate/10,000/day (90days)	0.35 (0.19-0.62)	0.78 (0.50-1.21)	0.26 (0.09-0.75)
Under 5 death Rate/10,000/day (90days)	1.22 (0.60-2.44)	0.19 (0.02-1.50)	0.47 (0.11-1.95)
Non-pregnant women with MUAC <18.5 cm	0	0	0
Pregnant & Lactating women with MUAC<21.0 cm	0	5.9 (0.0-15.1)	4.7 (0.2-9.1)
Pregnant & Lactating women with MUAC<23.0 cm	2.7(0.1-5.2)	10.1(4.3-15.8)	16.3 (5.4-27.2)
OVERALL NUTRITION SITUATION	Serious	Serious	Critical
Child Morbidity, Immunization, IYCF			
o Disease Outbreaks:	No outbreak	No outbreak	Measles outbreak
o Morbidity based on 2wk recall	Overall morbidity,30.3; Diarrhea- 16.7; Pneumonia,9.9	Overall morbidity,28.1 Diarrhea: 18.4 Pneumonia= 6.2, Measles, 3.1	Overall morbidity 22.8 Diarrhoea 8.5
o Immunization status/Vit. A	Vit. A, 74.2; Measles Vac. 70.4	Vit-A, 63.3; Measles Vac,70.4	Vit-A 75.4 ; Measles 67.4
o Children eating from <4 fdgps	88.8	97.1	36.2
o Children meeting min. feeding freq.	42.5	54.9	30.8
Public Health Indictors; Gender	N=404	N=300	N=237
o Households (HH) accessing safe water	0	4.0	11.0
o HH accessing sanitation facilities	27.0	42.3	38.0
o Relation between GAM & child sex	Statistically insignificant	Statistically insignificant	Statistically insignificant
o Relation between GAM & sex of hh head	Statistically insignificant	Statistically insignificant	Statistically insignificant
Proportion of hh consuming <4 fd gps	4.0	16.7	28.7
Mean Coping Strategy Index (CSI)	6.5	6.3	4.4
Food Security Phase	Stressed	Stressed	Stressed
Overall Risk to Deterioration	STABLE	STABLE	UNSTABLE

Malnutrition Trends at Health Facilities



High (>15%) and stable trend

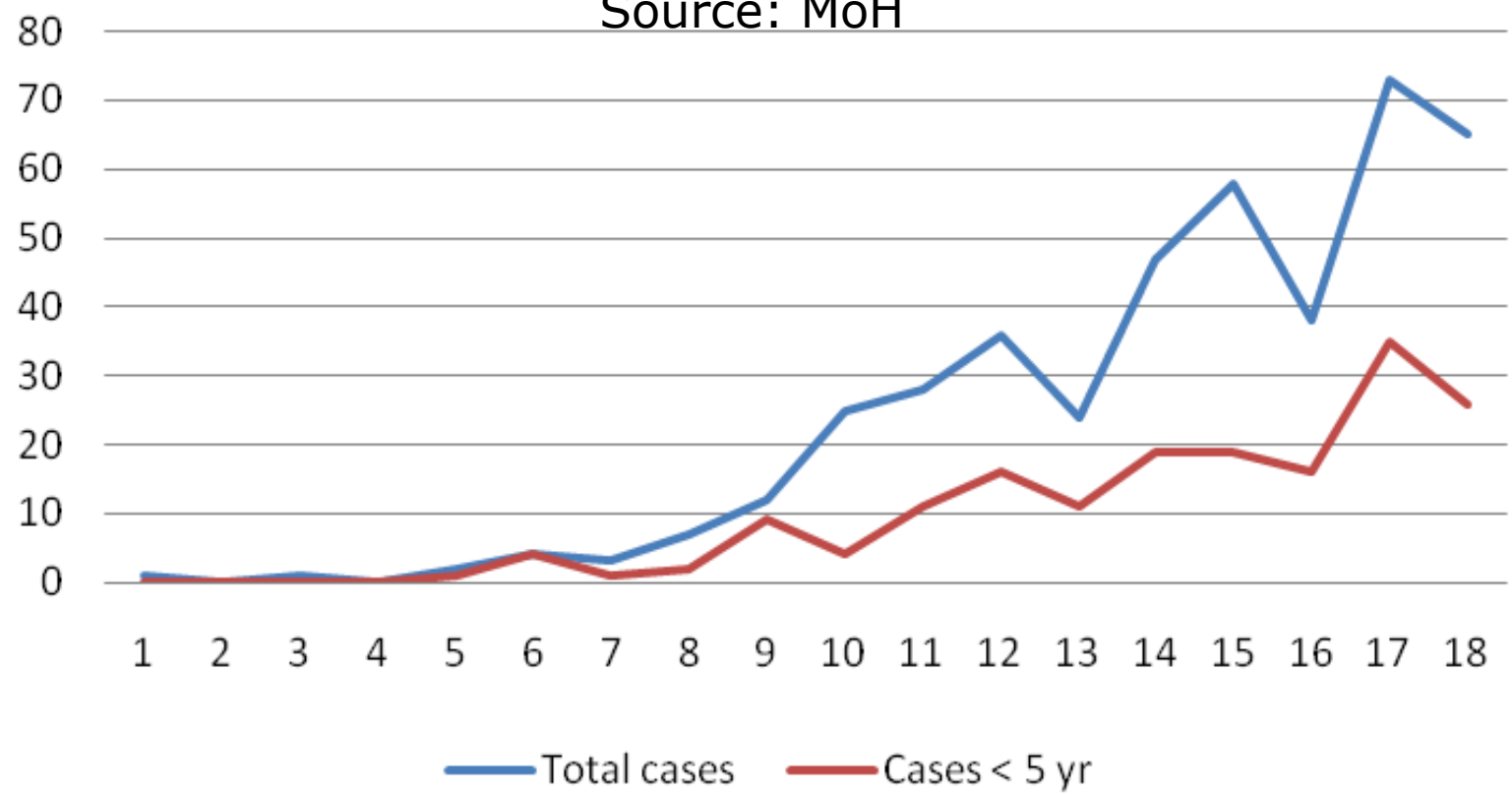
Outcome indicators	Gu '11 (N=582) July 2011	Deyr '11/12 (N=637) December 2011	Gu '12 (N=619) July 2012
Child Nutrition status			
○ <i>GAM (WHZ<-2 or oedema)</i>	23.2 (18.5-28.1)	16.3 (13.5-19.6)	20.1 (16.5-24.3)
○ <i>SAM (WHZ<-3 or oedema)</i>	6.7 (4.4-10.0)	2.7 (1.7-4.2)	5.4 (3.9-7.5)
○ <i>Mean weight-for-height</i>	-1.11±1.15	-0.90±1.19	-0.96±1.19
○ <i>Oedema</i>	0.1		0.2
○ <i>MUAC (<12.5 cm or oedema)</i>	11.5 (9.1-14.5)	3.0 (1.9-4.7)	2.8 (1.5-4.9)
○ <i>Severe MUAC (<11.5cm)</i>	2.9 (1.6-5.3)	1.5 (0.9-2.7)	1.1(0.4-3.0)
○ <i>Malnutrition Trends at Health Facilities</i>	High (>15%) and fluctuating	High (>10%) and fluctuating	High (>10%) and stable trend
○ <i>TFPs/SFPs Admission trends</i>	High and increasing	High and fluctuating	High and decreasing
Crude death Rate/10,000/day (90days)	0.34 (0-14.0.82)	0.19 (0.09-0.40)	0.04 (0.01-0.32)
Under 5 death Rate/10,000/day (90days)	0.63 (0.17-2.29)	0.48 (0.15-1.45)	0.19 (0.02-1.46)
Non-pregnant women with MUAC <18.5 cm	0	0.5 (0.0-1.5)	0
Pregnant & Lactating women with MUAC<21.0 cm	2.4 (0.0-5.3)	1.3 (0.0-3.2)	2.9 (0.0-7.2)
Pregnant & Lactating women with MUAC<23.0 cm	23.5(13.8-33.2)	9.8 (4.5-15.3)	10.6 (1.7-19.4)
OVERALL NUTRITION SITUATION	Very Critical	Critical	Very Critical
Child Morbidity, Immunization, IYCF			
○ <i>Disease Outbreaks:</i>	No outbreak	No outbreak	Measles outbreak in Ainabo district
○ <i>Morbidity based on 2wk recall</i>	Overall morbidity, 45.3; Diarrhea:29; Pneumonia:10.8 Fever:23.39; Measles:5.5	Overall morbidity,33.9; Diarrhoea: 8.4; Pneumonia: 6.3; Measles: 4.7; Fever: 27	Overall morbidity 23.9 Measles ,4.2 Diarrhea, 8.1 Pneumonia , 8.1
○ <i>Immunization status/Vit. A</i>	Vit. A,63.7; Measles Va:63.6	Vit- A, 65.3; Measles : 64.7	Vit –A 74.8; Measles Vac.;77.2
○ <i>Children eating from <4 fdgps</i>	81.8	97.4	96.3
○ <i>Children meeting min. feeding freq.</i>	27.6	51.0	45.6
Public Health Indicators; Gender	N=421	N=403	N=351
○ <i>Households (HH) accessing safe water</i>	1.6	19.3	12.3
○ <i>HH accessing sanitation facilities</i>	27.0	58.8	57.6
○ <i>Relation between GAM & child sex</i>	Statistically insignificant	Statistically insignificant	Statistically insignificant
○ <i>Relation between GAM & sex of hh head</i>	Statistically insignificant	Statistically insignificant	Statistically insignificant
<i>Proportion of hh consuming <4 fd gps</i>	2.0	15.4	12.3
Mean Coping Strategy Index (CSI)	12.2	5.6	
Food Security Phase	Crisis	Crisis	Stressed
Overall Risk to Deterioration	UNCERTAIN	UNSTABLE	UNSTABLE



Low (<10%) and stable trend

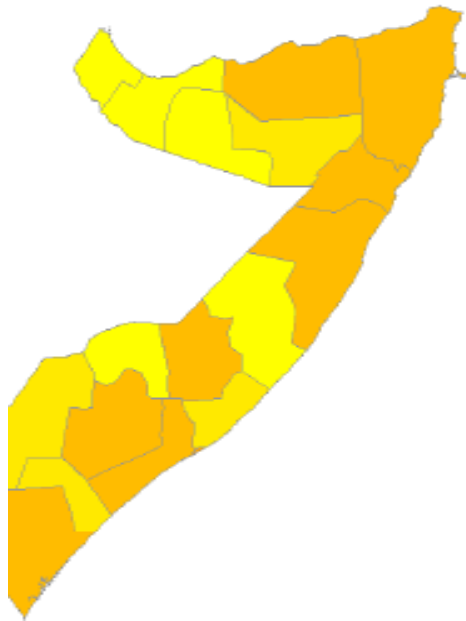
Trend of measles cases in Burao by week, 2012

Source: MoH

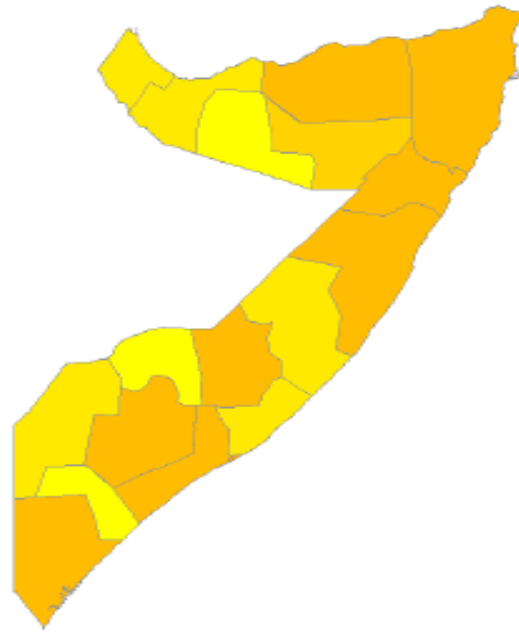


Map Indicating Cholera Cases Source WHO

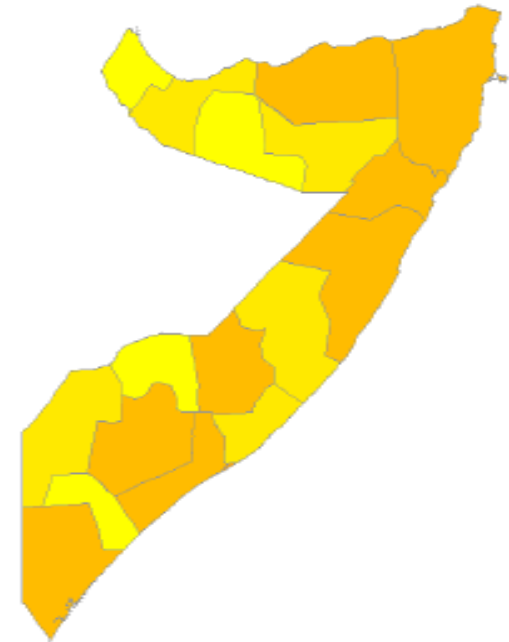
April 2012



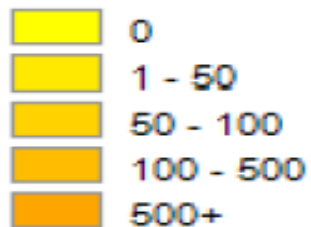
May 2012



June 2012



Number of cholera cases

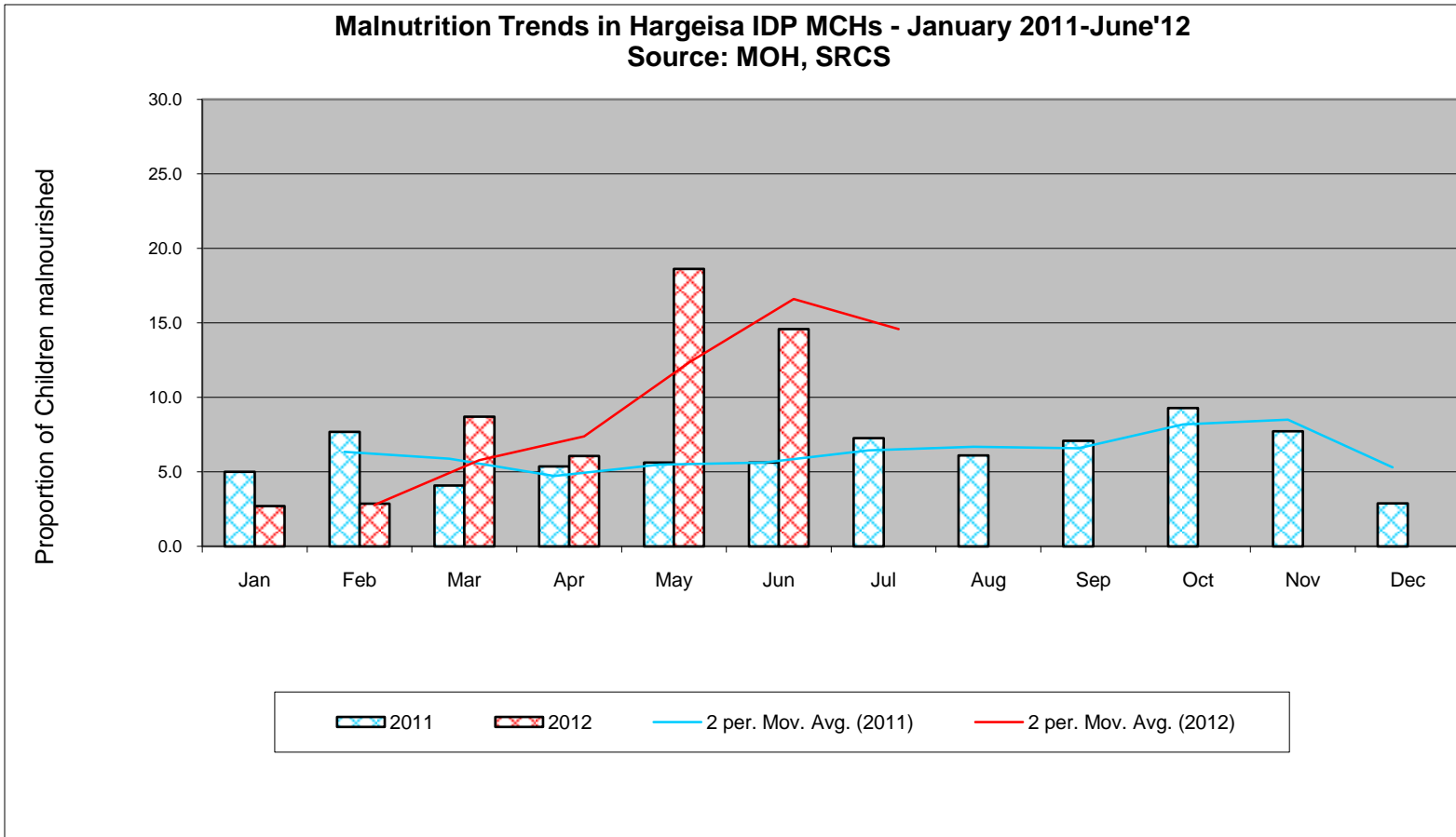




An Enumerator interviewing a mother in an IDP camp in Hargeisa

Outcome indicators	Hargeisa IDP, Summary of Findings		
	Gu'11 (N= 452) June 2011	Deyr '11/12 (N=690) November 2011	Gu'12 (N= 497) July 2012
Child Nutrition status			
o GAM (WHZ<-2 or oedema)	10.9 (8.1-14.05)	12.0 (8.9-16.1)	12.0 (9.2-15.)
o SAM (WHZ<-3 or oedema)	2.2 (1.0-5.0)	1.3 (0.7-2.3)	2.9 (1.7-4.8)
o Mean weight-for-height	-0.57±1.17	-0.52±1.18	-0.61±1.17
o Oedema	0.1	0.4	0.4
o MUAC (<12.5 cm or oedema)	6.4 (4.3-19.3)	6.5 (4.4-9.5)	4.1(2.4-6.9)
o Severe MUAC (<11.5cm)	1.6 (0.8-3.3)	1.9 (1.0-3.6)	1.4 (0.6-3.5)
o Malnutrition Trends at Health Facilities	Low (<10%) and decreasing	Low (<5%) and decreasing trend	Low(>10%) but increasing trend
Crude death Rate/10,000/day (90days)	0.37 (0-19.073)	0.38 (0.20-0.71)	0.14 (0.03-0.61)
Under 5 death Rate/10,000/day (90days)	0.59 (0.22-1.55)	0.44 (0.14-1.450)	0.21 (0.03-1.65)
Non-pregnant women with MUAC <18.5 cm	0.9 (0.0-2.1)	1.0 (0.0-2.4)	0
Pregnant & Lactating women with MUAC<21.0cm	2.5 (7.1-20.5)	4.2 (1.5-6.8)	0
Pregnant & Lactating women with MUAC<23.0 cm	13.0 (7.1-20.5)	9.3 (4.8-13.8)	2.3 (0.0-4.9)
OVERALL NUTRITION SITUATION	Serious	Serious	Serious
Child Morbidity, Immunization, IYCF			
o Disease Outbreaks: o Morbidity based on 2wk recall	No out break Overall morbidity,25.3; Diarrhoea ,11.1; Pneumonia 9.9 Measles; 2.8 ;Febrile, 9.7	No out break Overall morbidity,14.5; Diarrhoea ,9.1; Pneumonia 4.3 Measles; 0.1 ; Febrile, 7.4	No out break Overall morbidity,31.8; Diarrhoea ,20.3; Pneumonia 8.6 Measles; 4.2 ; Febrile, 13.9
o Immunization status/Vit. A	Vitamin A, 81.8 ; Measles Vaccination,80.2	Vitamin A, Measles Vaccination,65.7	Vitamin A, 66.4;polio vacc,91.3 ; Measles Vaccination,65.7
o Children eating from <4 fdgps	93.1	87.2	95.6
o Children meeting min. feeding freq.	55.1	51.4	41.0
Public Health Indicators; Gender	N=452	N=412	N=269
o Households (HH) accessing safe water	76.5	97.3	100
o HH accessing sanitation facilities	80.3	90.5	87.8
o Relation between GAM & child sex	Statistically insignificant	Statistically insignificant	Statistically insignificant
o Relation between GAM & sex of hh head	Statistically insignificant	Statistically insignificant	Statistically insignificant
Proportion of hh consuming <4 fd gps	10.2	16.4	4.5
Food Security Phase	Stressed	Stressed	Stressed
Overall Risk to Deterioration	STABLE	STABLE	STABLE

Malnutrition Trends in Hargeisa IDP MCHs - January 2011-June'12
 Source: MOH, SRCS

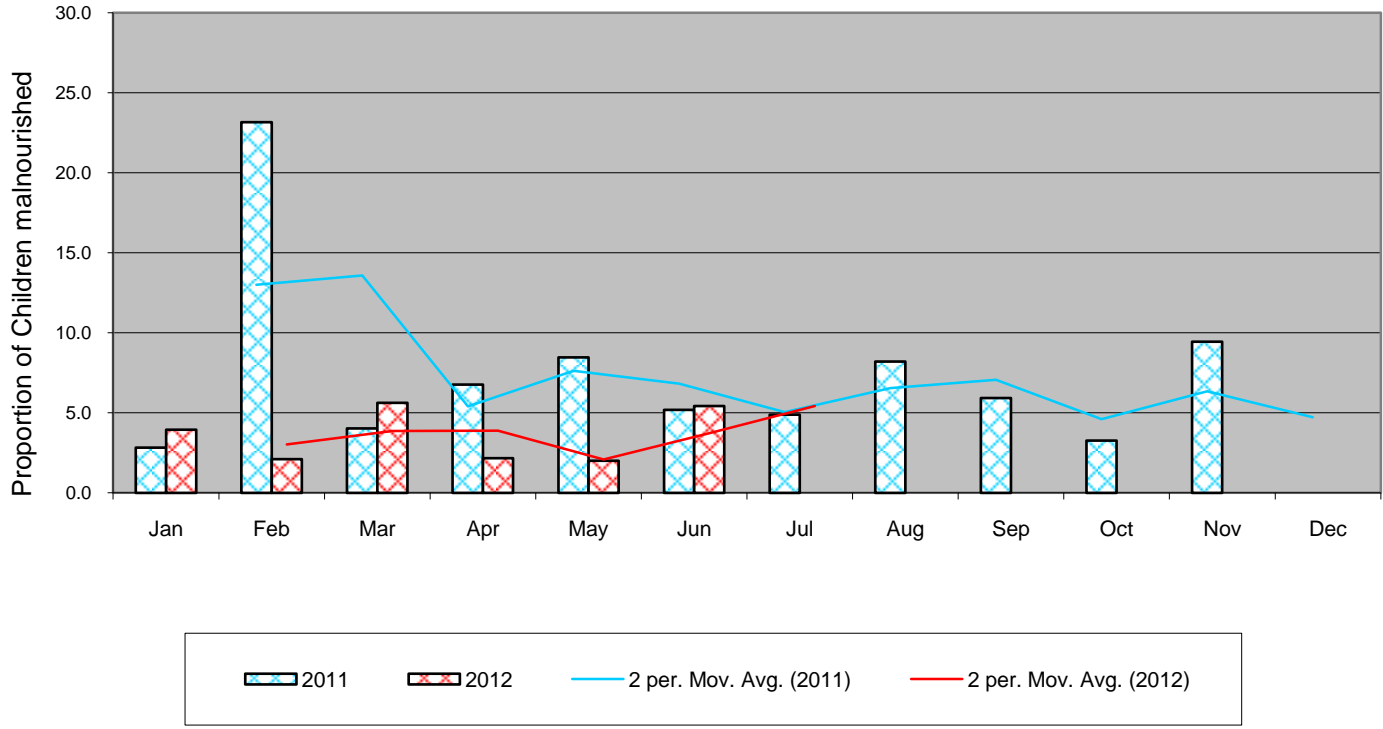


Low (<10%) but increasing

Berbera IDP, Summary of Findings

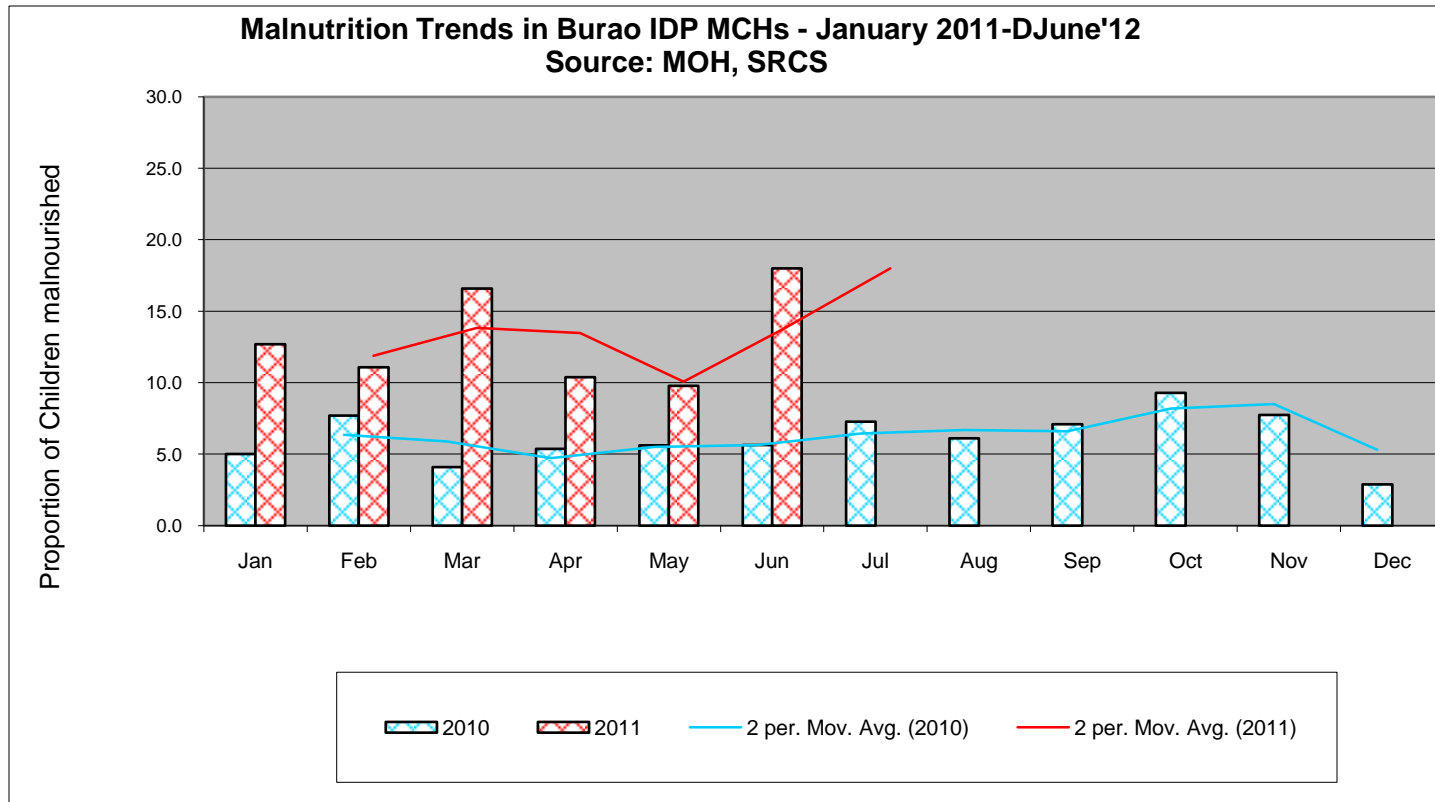
Outcome indicators	Gu'11 (N=542)0 June 2011	Deyr-11/12 (N=610) November 2011	Post G 2012; (N=517) July 2012
Child Nutrition status			
o GAM (WHZ<-2 or oedema)	14.5	18.0	16.3 (13.6-19.3)
o SAM (WHZ<-3 or oedema)	3.0	3.1	3.5 (2.1-5.6)
o Oedema	0	0.2	0
o MUAC (<12.5 cm or oedema)	5.9	6.6	4.4 (2.9-6.9)
o MUAC(<11.5cm or oedema)			1.4 (0.6-3.6)
o Mean weight-for-height	-0.74±1.18	-0.89±1.18	-0.94±1.06
o Malnutrition Trends at Health Facilities	Low (<10%) and stable trends	Low (<10%) and fluctuating trend	Low (<5%) and stable trend
o TFPs/SFPs Admission trends	Low and stable numbers	Low and stable numbers	Low and fluctuating numbers
Crude death Rate/10,000/day (90days)	0.28 (0.15-0.54)	0.37 (0.18-0.76)	0.49 (1.4-8.7)
Under 5 death Rate/10,000/day (90days)	0.31 (0.09-1.13)	1.27(0.55-2.95)	0.74 (0.28-1.97)
Non-pregnant women with MUAC <18.5 cm	1.4	1.3	1.5 (0.0-4.4)
Pregnant & Lactating women with MUAC<21.0 cm	0.9	1.0	1.5 (0.0-4.4)
Pregnant & Lactating women with MUAC<23.0 cm	9.4	8.9	5.1 (1.4-8.7)
OVERALL NUTRITION SITUATION	Serious	Critical	Critical
Child Morbidity, Immunization, IYCF			
o Disease Outbreaks: o Morbidity based on 2wk recall	No outbreak Overall morbidity,34.1; Diarrhoea 11.8 Pneumonia 6.0; Measles, 1.2	No outbreak Overall morbidity,23.4; Diarrhea: 17.0 Pneumonia:5.7; Measles:1.0	•No disease outbreak •Morbidity:20.7 •ARI:7.6 •Fever:11.0 •Measles:3.4
o Immunization status/Vit. A	Measles vaccination85.9 Vitamin A 87.3	Vitamin A: 67.2; Measles Vaccination. 65.4	VitA:82.0, Measles:77.0
o Children eating from <4 fdgps	70.3	98.6	90.8
o Children meeting min. feeding freq.	55.8	48.6	45.1
Public Health Indicators; Gender	N=476	N=440	N=332
o Households (HH) accessing safe water	98.5	97.0	97.9
o HH accessing sanitation facilities	88.9	94.3	96.1
o Relation between GAM & child sex	Statistically insignificant	Statistically insignificant	Statistically insignificant
o Relation between GAM & sex of hh head	Statistically insignificant	Statistically insignificant	Statistically insignificant
Proportion of hh consuming <4 fd gps	21.6	12.0	13.0(5.3-20.6)
Food Security Phase	Stressed	Crisis	Crisis
Overall Risk to Deterioration	STABLE	POTENTIAL TO IMPROVE	POTENTIAL TO IMPROVE

Malnutrition Trends in Jamalaye-Berbera MCHs - January 2011- June '12
Source : MOH, SCRS



Low (<5%) and stable trend

Outcome indicators	Burao IDP, Summary of Findings		
	Gu'11 (N=652) June 2011	Deyr '11/12 (N=617) November 2011	Post GU 012 (N=517) June 2012
Child Nutrition status			
o GAM (WHZ<-2 or oedema)	19.1(14.6-24.5)	20.3 (15.3-26.3)	18.4 (14.7-22.7)
o SAM (WHZ<-3 or oedema)	5.6 (4.1-7.7)	4.5 (2.6-7.9)	4.3 (2.6-6.9)
o Mean weight-for-height	-89±1.21	-0.86±1.22	-0.93±1.13
o Oedema	1.2	0.6	0.6
o MUAC (<12.5 cm or oedema)	8.1(5.5-11.5)	9.4 (6.1-14.3)	10.3 (7.2-22.7)
o Severe MUAC (<11.5 cm)	2.5 (1.4-4.5)	1.6 (0.8-3.4)	3.0 (1.7-5.4)
o HIS Nutrition Trends	High (>15%) and increasing	Low (<10%) and decreasing trends	High (>10%) and fluctuating trend
o TFPs/SFPs Admission trends	High and increasing	High and fluctuating	High and fluctuating
Crude death Rate/10,000/day (90days)	0.56 (0.30-0.91)	0.31 (0.018-0.54)	0.5 (0.28-0.88)
Under 5 death Rate/10,000/day (90days)	2.02 (1.21-3.34)	0.14 (0.02-1.11)	1.01 (0.36-2.80)
Non-pregnant women with MUAC <18.5 cm	0.4 (0.0-1.4)	2.8 (0.1-5.7)	2f.2 (0.0-4.6)
Pregnant & Lactating women with MUAC<21.0 cm	2.3 (2.8-11.6)	3.3 (0.3-6.2)	6.4 (3.7-9.1)
Pregnant & Lactating women with MUAC<23.0 cm	7.2 (2.8-11.6)	9.8 (4.5-15.1)	12.4 (4.9-19.8)
OVERALL NUTRITION SITUATION	Critical	Very Critical	Critical
Child Morbidity, Immunization, IYCF			
o Disease Outbreaks: o Morbidity based on 2wk recall	No disease outbreak Overall morbidity,31.1; Diarrhea:15.6; Pneumonia,14.2;Measles:1 .6	No disease outbreak Overall morbidity,31.1; Diarrhea:15.6; Pneumonia,9.4;Measles:2.1;	Measles outbreak in Burao Overall morbidity,40.3; Diarrhea:27.0; Pneumonia,13.5;Measles:6.6;
o Immunization status/Vit. A	Vit .A,81.9; Polio vacc,95.6; Measles, vacc,72.9	Vit .A,71.3; Polio vacc,89.6; Measles,vacc,81.0	Measles 85.6, Vit-A 74.5
o Children eating from <4 fdgps	92.4	98.6	93.7
o Children meeting min. feeding freq.	47.3	39.4	21.8
Public Health Indicators; Gender	N=512	N=326	N=261
o Households (HH) accessing safe water	72.9	98.7	95.4
o HH accessing sanitation facilities	75.6	67.8	82.8
o Relation between GAM & child sex	Statistically insignificant	Statistically insignificant	Statistically insignificant
o Relation between GAM & sex of hh head	Statistically insignificant	Statistically insignificant	Statistically insignificant
Proportion of hh consuming <4 fd gps	13.3	16.4	
Food Security Phase	Crisis	Crisis	Crisis
Overall Risk to Deterioration	UNSTABLE	POTENTIAL TO IMPROVE	POTENTIAL TO IMPROVE



High (> 10%) and fluctuating



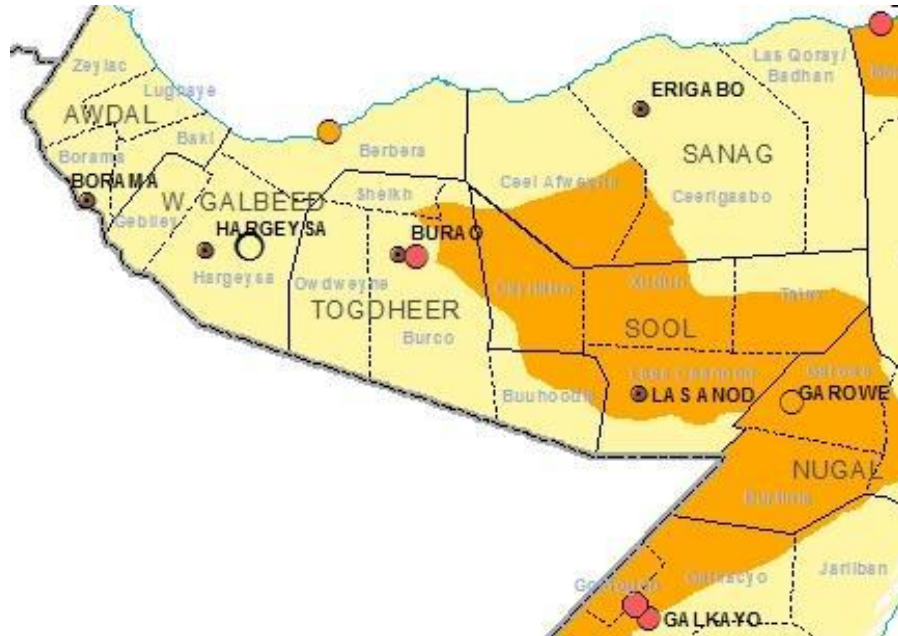
Children in Hargeisa IDP camp

Summary of Driving Factors

- ***Aggravating factors***
 - Reduced milk access in West Golis and Hawd
 - High reported morbidity in most livelihoods (>20%)
 - Disease outbreak in some livelihoods (Hawd & Nugal Valley Ainabo & Burao districts)
 - Inappropriate child feeding and care practices
 - Poor access to sanitation facilities and safe water in rural LHZs
 - Destitution in central Nugal Valley livelihood
- ***Mitigating factors***
 - Humanitarian support
 - Improved milk access in some pastoral livelihoods (East Golis and Sool plateau)
 - Social support

Nutrition Situation Estimates - Somaliland Maps

North West Regions Nutrition Situation Estimates, January 2012



North West Regions Nutrition Situation Estimates, August 2012



Data Quality

Location		Criteria	Missing/Flagged data	Overall sex ratio	Overall age distribution	Digit Preference score-weight	Digit Preference score-Height	SD WHZ	Skewness WHZ	Kurtosis WHZ	Poisson Distribution
Northwest											
West Golis	July 2012	Category	Excellent	Excellent	Acceptable	Excellent	Acceptable	Good	Excellent	Excellent	Good
		Score	0	0	4	0	4	2	0	0	1
East Golis	July 2012	Category	Excellent	Good	Excellent	Acceptable	Good	Excellent	Excellent	Excellent	Excellent
		Score	0	2	0	4	2	0	0	0	0
Nugal Valley	July 2012	Category	Excellent	Excellent	Excellent	Acceptable	Excellent	Excellent	Excellent	Excellent	Excellent
		Score	0	0	0	6	0	0	0	0	0
Hawd	July 2012	Category	Excellent	Excellent	Acceptable	Good	Good	Good	Excellent	Excellent	Problematic
		Score	0	0	4	2	2	2	0	0	5
Sool Plateau	July 2012	Category	Good	Excellent	Excellent	Excellent	Good	Excellent	Excellent	Excellent	Excellent
		Score	5	0	0	0	2	0	0	0	0
Agropastoral	July 2012	Category	Excellent	Excellent	Acceptable	Excellent	Acceptable	Acceptable	Excellent	Excellent	Excellent
		Score	0	0	4	0	4	6	0	0	0

Thanks

Joseph Waweru

Fuaad Hassan

Osman Warsame

Abdullahi Warsame

Abdirashid Ismail

Amal Nagil Mohamed