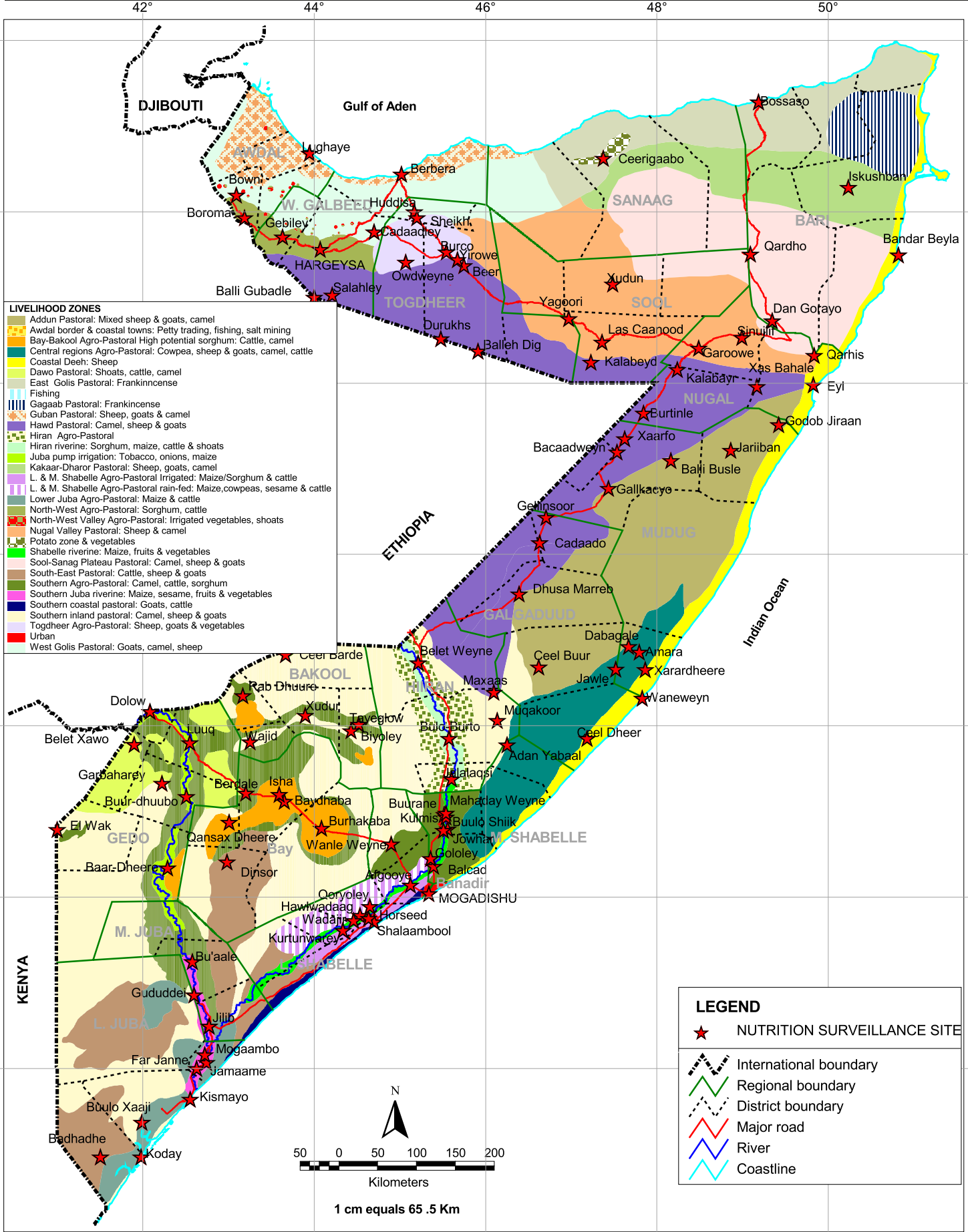
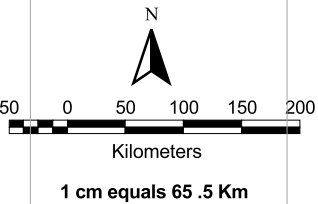


SOMALIA: NUTRITION SURVEILLANCE LOCATIONS



- LIVELIHOOD ZONES**
- Addun Pastoral: Mixed sheep & goats, camel
 - Awdal border & coastal towns: Petty trading, fishing, salt mining
 - Bay-Bakool Agro-Pastoral: High potential sorghum: Cattle, camel
 - Central regions Agro-Pastoral: Cowpea, sheep & goats, camel, cattle
 - Coastal Deeh: Sheep
 - Dawo Pastoral: Shoats, cattle, camel
 - East Gollis Pastoral: Frankincense
 - Fishing
 - Gagaab Pastoral: Frankincense
 - Guban Pastoral: Sheep, goats & camel
 - Hawd Pastoral: Camel, sheep & goats
 - Hiran Agro-Pastoral
 - Hiran riverine: Sorghum, maize, cattle & shoats
 - Juba pump irrigation: Tobacco, onions, maize
 - Kakaar-Dharor Pastoral: Sheep, goats, camel
 - L. & M. Shabelle Agro-Pastoral Irrigated: Maize/Sorghum & cattle
 - L. & M. Shabelle Agro-Pastoral rain-fed: Maize, cowpeas, sesame & cattle
 - Lower Juba Agro-Pastoral: Maize & cattle
 - North-West Agro-Pastoral: Sorghum, cattle
 - North-West Valley Agro-Pastoral: Irrigated vegetables, shoats
 - Nugal Valley Pastoral: Sheep & camel
 - Potato zone & vegetables
 - Shabelle riverine: Maize, fruits & vegetables
 - Sool-Sanaag Plateau Pastoral: Camel, sheep & goats
 - South-East Pastoral: Cattle, sheep & goats
 - Southern Agro-Pastoral: Camel, cattle, sorghum
 - Southern Juba riverine: Maize, sesame, fruits & vegetables
 - Southern coastal pastoral: Goats, cattle
 - Southern inland pastoral: Camel, sheep & goats
 - Togdheer Agro-Pastoral: Sheep, goats & vegetables
 - Urban
 - West Gollis Pastoral: Goats, camel, sheep

- LEGEND**
- NUTRITION SURVEILLANCE SITE
 - International boundary
 - Regional boundary
 - District boundary
 - Major road
 - River
 - Coastline



Produced: January, 2005

Food Security Analysis Unit - Somalia

P.O. Box 1230 Village Market, Nairobi, Kenya Email: fsauinfo@fsau.or.ke tel: 254-20-3745734 fax: 254-20-3740598
 FSAU is managed by FAO, funded by EC and USAID-Somalia FSAU Partners are FEWS, WFP, FAO, UNOCHA SCF-UK, UNICEF, CARE, UNDP
 The boundaries and names on these maps do not imply official endorsement or acceptance by the United Nations. The regional & District boundaries reflect those endorsed by the Government of the Republic of Somalia in 1986.

