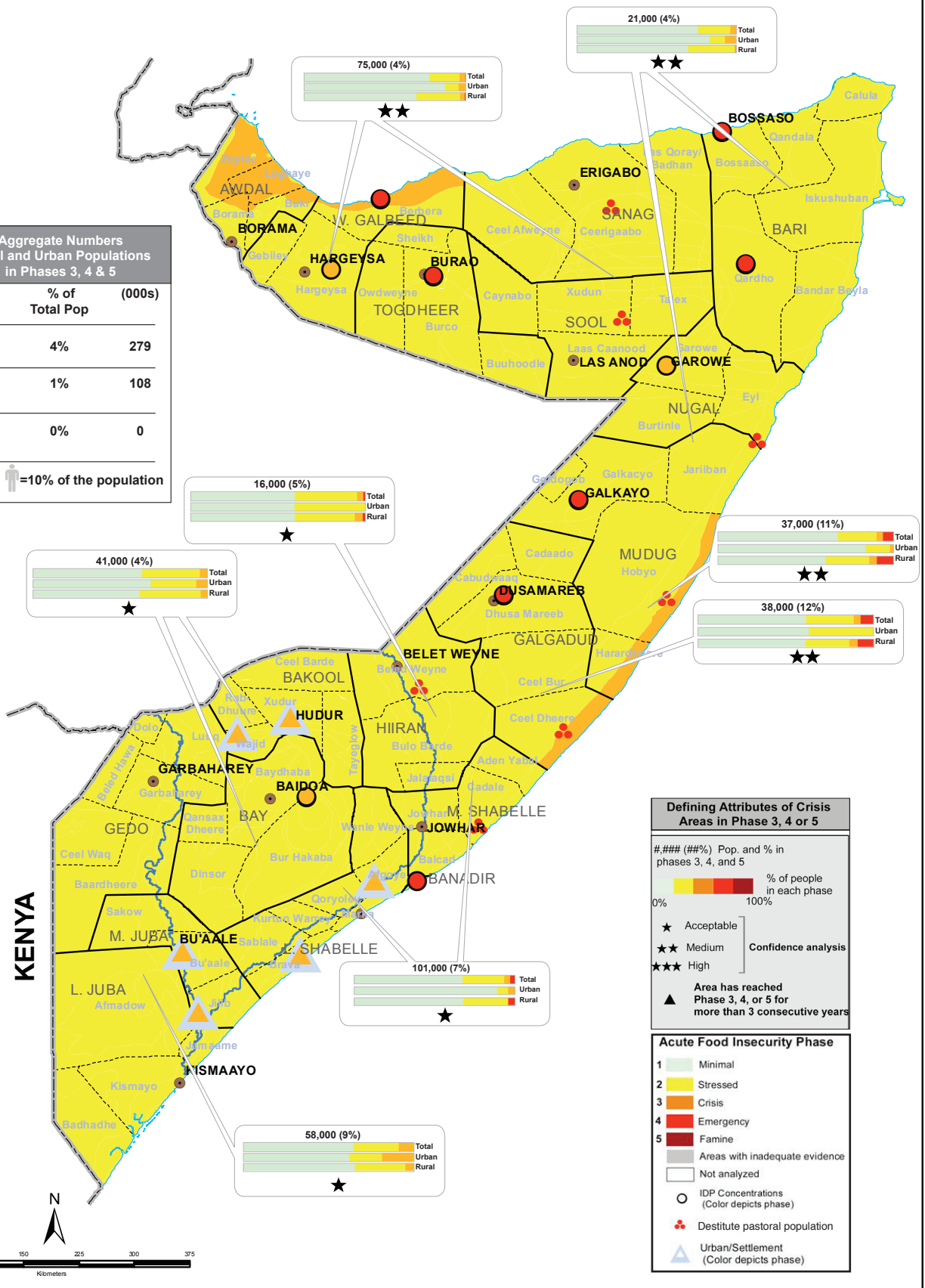




Aggregate Numbers Rural and Urban Populations in Phases 3, 4 & 5

Phase	% of Total Pop	(000s)
3	4%	279
4	1%	108
5	0%	0

☺ = 10% of the population



Defining Attributes of Crisis Areas in Phase 3, 4 or 5

(###) Pop. and % in phases 3, 4, and 5

0% to 100% % of people in each phase

★ Acceptable
★★ Medium
★★★ High

▲ Area has reached Phase 3, 4, or 5 for more than 3 consecutive years

Acute Food Insecurity Phase

- Minimal
- Stressed
- Crisis
- Emergency
- Famine

◻ Areas with inadequate evidence
◻ Not analyzed

○ IDP Concentrations (Color depicts phase)
⊕ Destitute pastoral population
▲ Urban/Settlement (Color depicts phase)